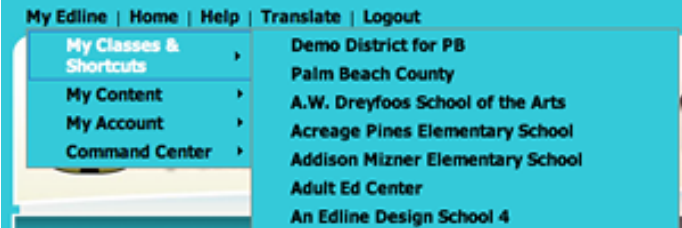
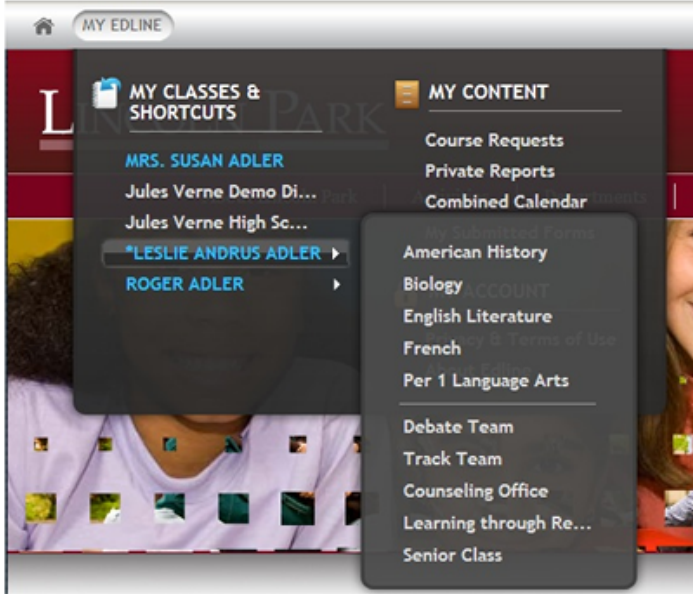





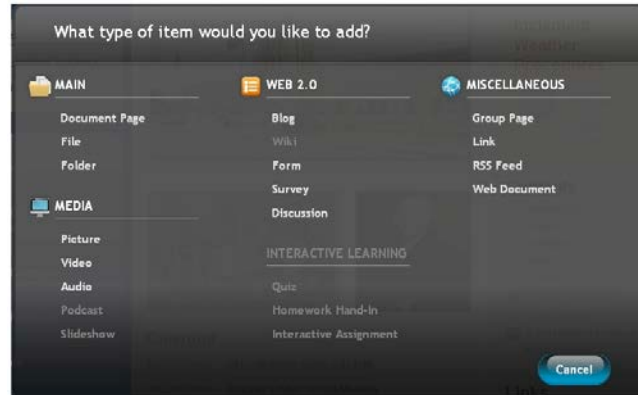


Summary of Changes to the Edline User Interface for 2011

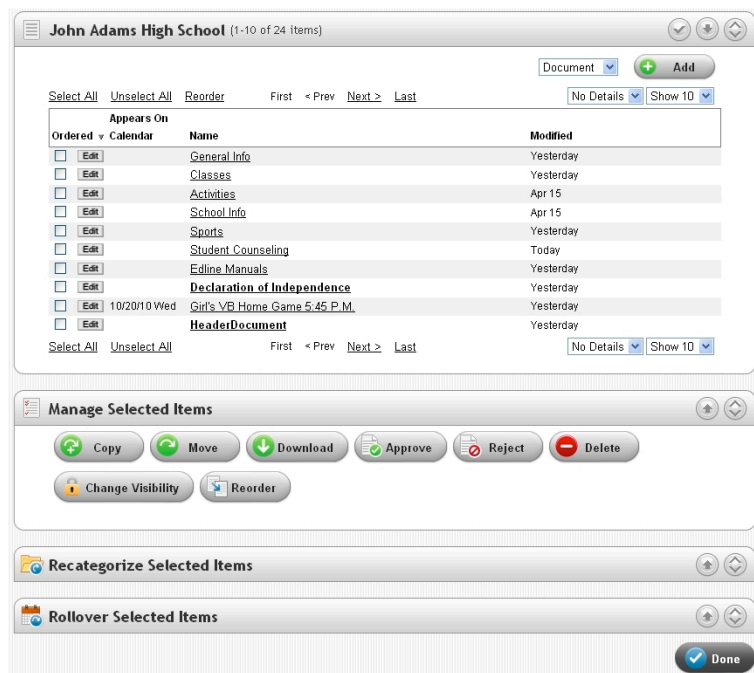
You can find additional information on the new Edline features at this link:
http://www.edline.com/docs/Edline_Help/school/Content/NewFeatures.htm

<p>1. The Edline toolbar at the top of every Edline page features more options and an improved more modern appearance.</p> <ol style="list-style-type: none"> Easier access to My Groups for teachers, students, and parents Easier access for parents who use combined accounts. Adds the “Edit this page” feature that allows in-page editing which greatly simplifies the process of page edits. Provides access to page translation Login button moves to the right and into the toolbar 	<p>Old Edline Toolbar</p>  <p>New Edline Toolbar</p> 
<p>2. In-page editing now allows individual pages to be edited more efficiently (go to the page and edit it vs. go to a list, find the page, click edit, make changes, update, save.). Options are now visible in the toolbar.</p>	 <p><i>Edit Mode Toolbar</i></p>

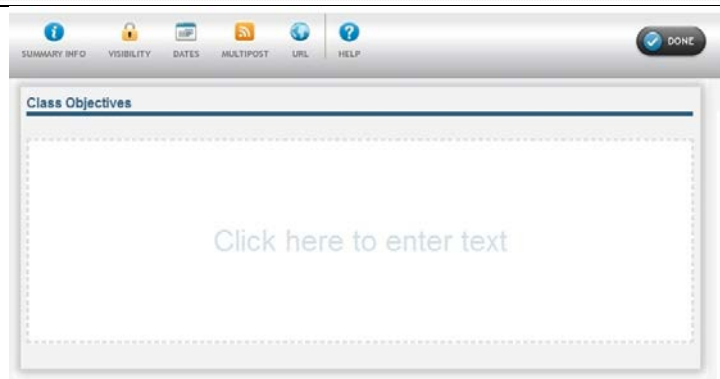
3. **New Add/Edit buttons.** Users will now see two new buttons in their content boxes. A pencil icon  to edit the items or a plus sign  to add an item. The interface for adding items (shown) has been significantly improved.



4. **Resource listings** have been modernized and improved. Graphics have been added to make the buttons and tools easier to understand and access. Pages are better organized and more accessible.



5. **New WYSIWYG Document page creation.** When you choose to add a new document or news item to your website the system will display the new Document page where you see the page exactly as the viewer will see the document. (No more multiple menus and clicks!)



6. **New features:**
- Slideshows
 - Blogs
 - Video uploads
 - “Clickable” images