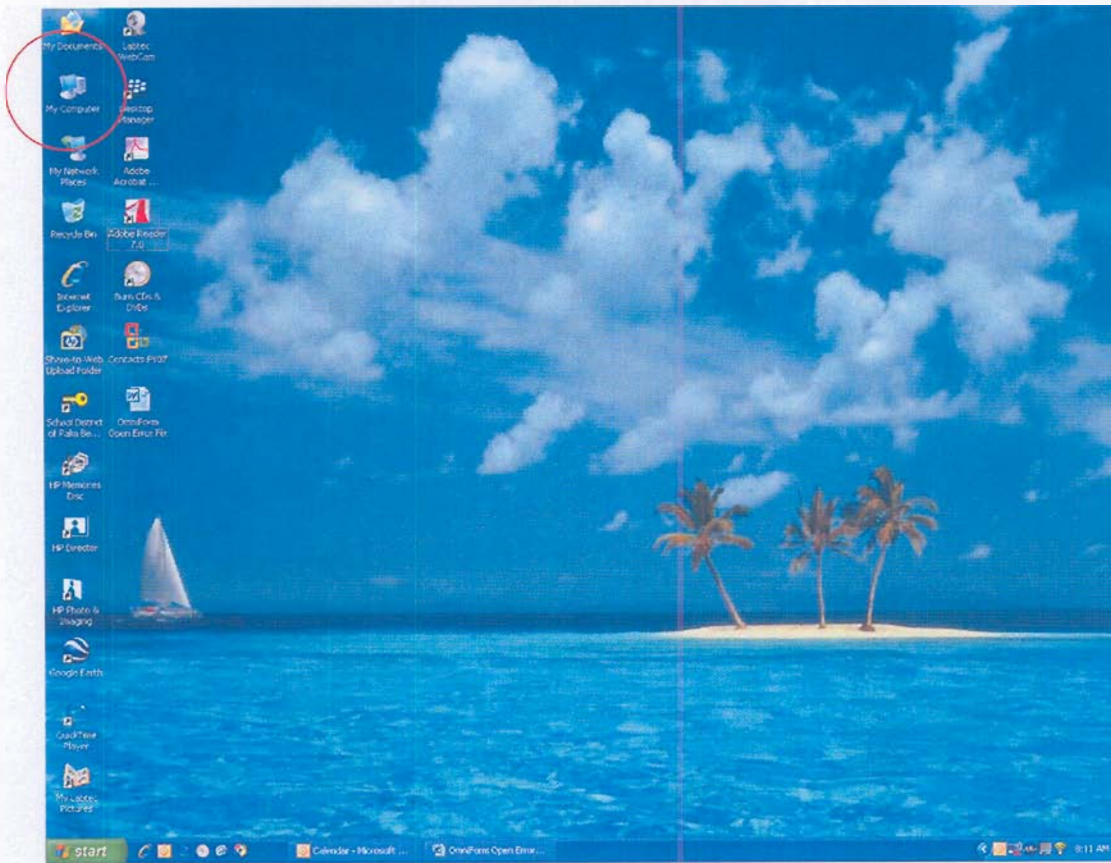
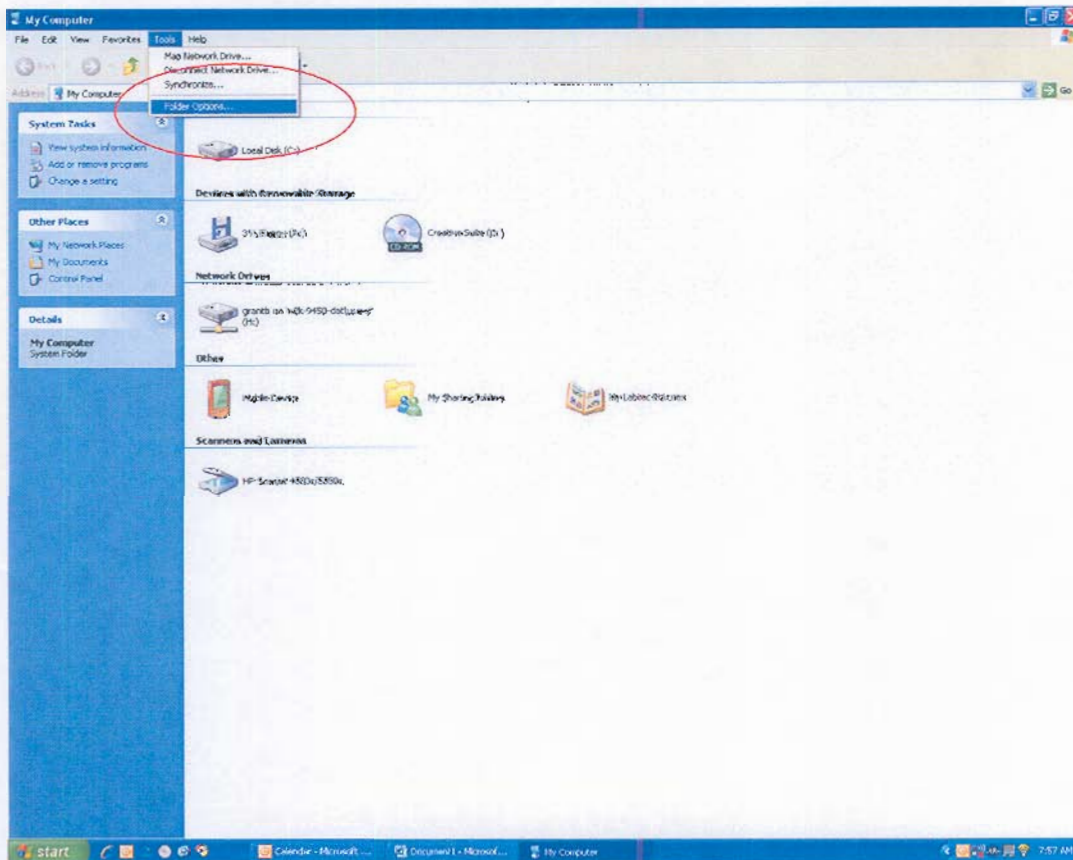


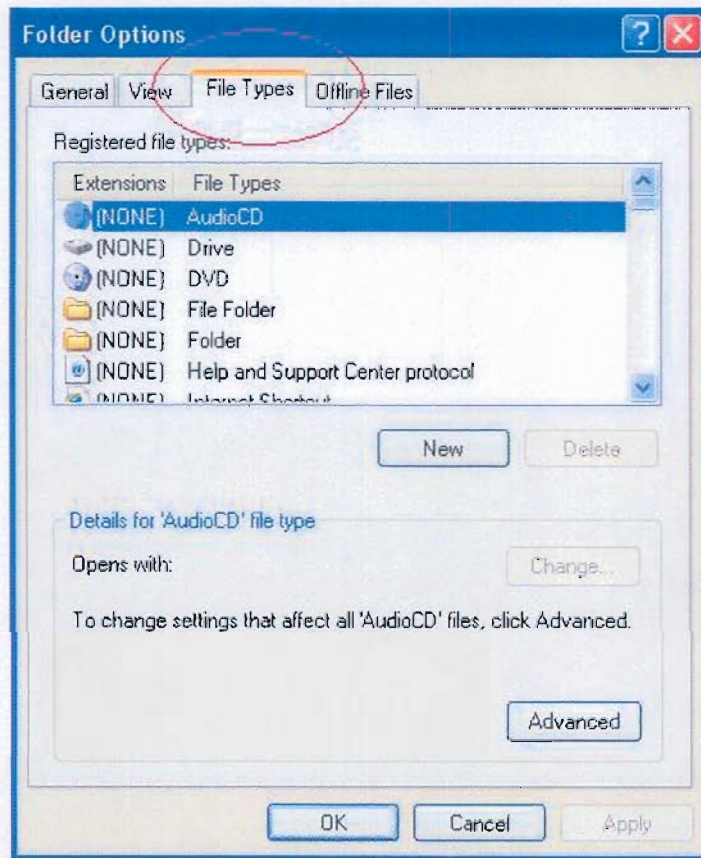
~ OmniForm Open Error Fix ~



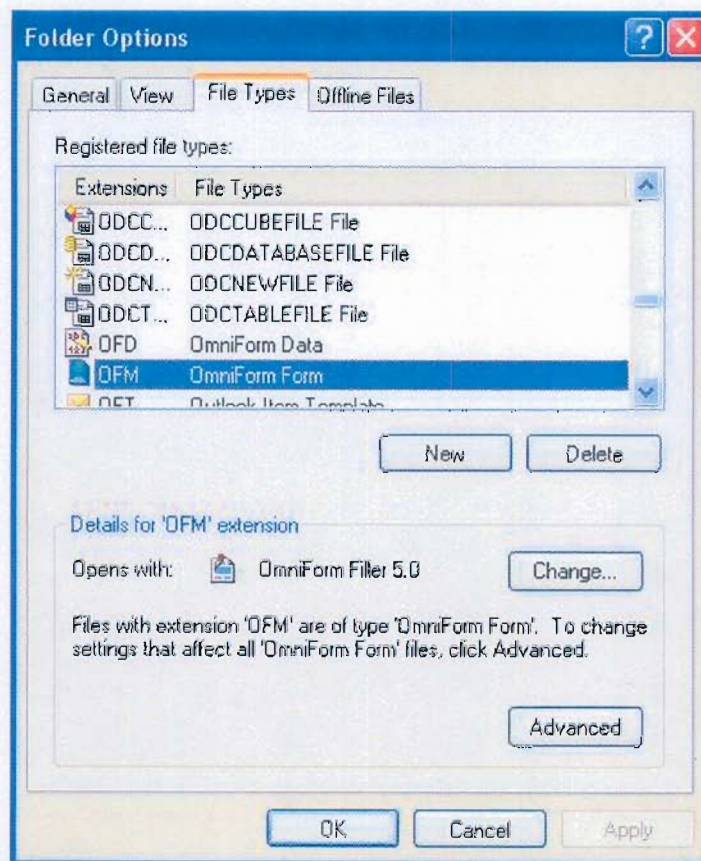
Open My Computer



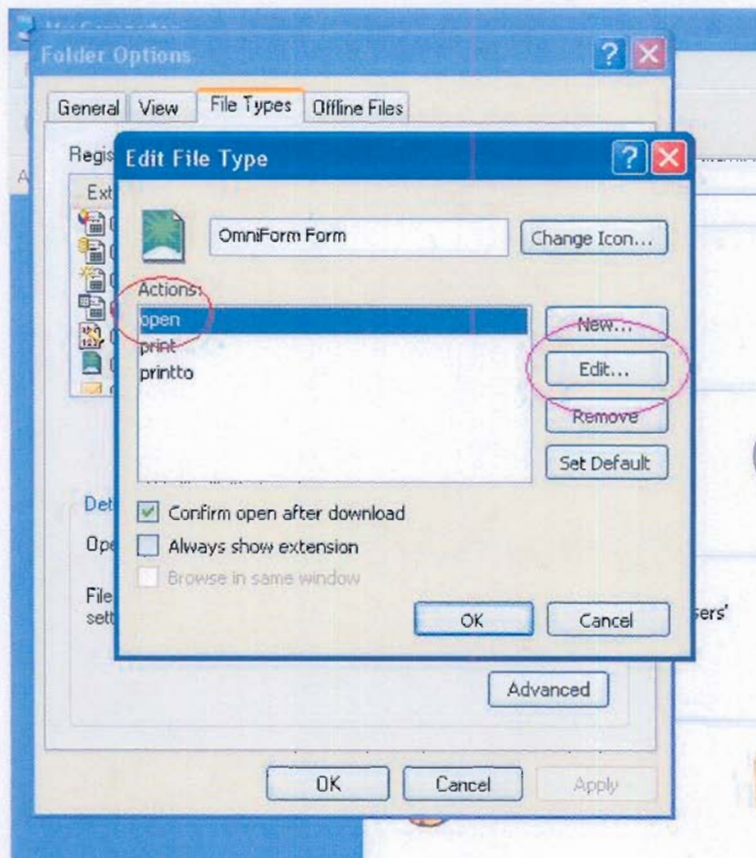
Click Tools, and select Folder Options



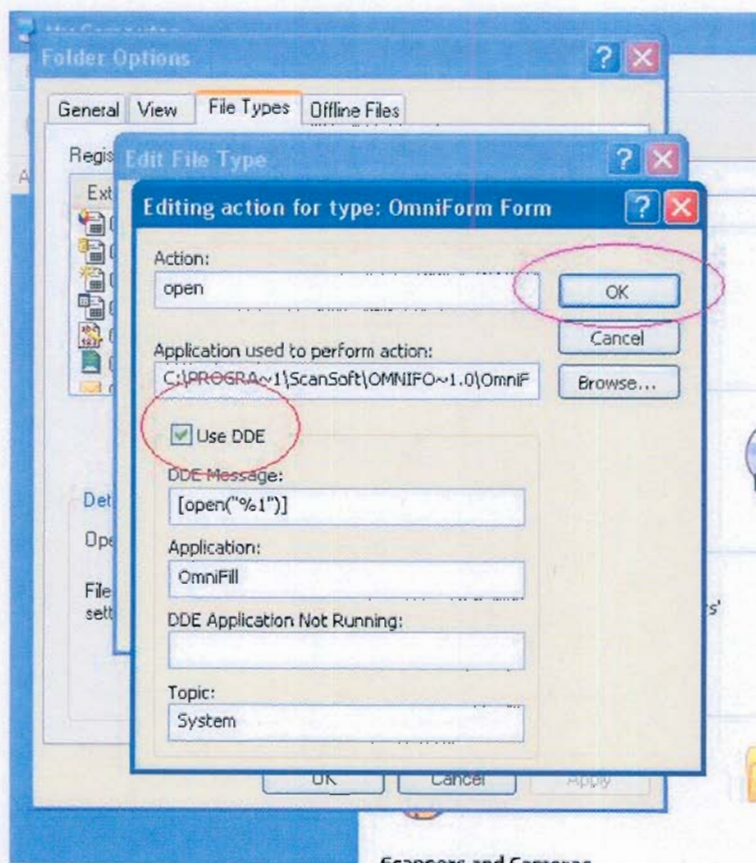
Select the File Types tab from the top of the window



Type the letters OFM; then click the Advanced button



Choose OPEN from the Actions section; next, click the EDIT button



Un-Check the Use DDE option; next, click the OK button

Lastly, select OK, and Close all Windows. You may want to restart the computer as a precaution.