

[MAIN MENU](#)

Survey Results

**SURVEY NAME:**  
**LL/BP Principals' Survey**

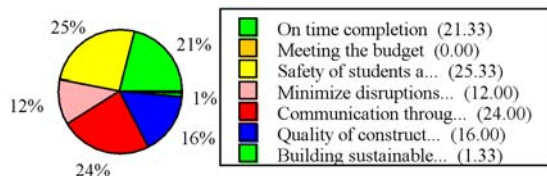
**SURVEY DEMOGRAPHICS:**  
[Click Here](#) for demographic data.

**SURVEY RESULTS:**

1. What are the three highest priorities among those listed below? (choose only 3 items)  
 Question Type: Multiple Choice

Answer	Percentage	Number of Entries
On time completion	21.33%	16 entries
Meeting the budget	0.00%	0 entries
Safety of students and staff	25.33%	19 entries
Minimize disruptions to instruction	12.00%	9 entries
Communication throughout the project	24.00%	18 entries
Quality of construction	16.00%	12 entries
Building sustainable (green) school buildings	1.33%	1 entries
Aesthetics (appearance of the completed facility)	0.00%	0 entries

**Total Entries = 75**



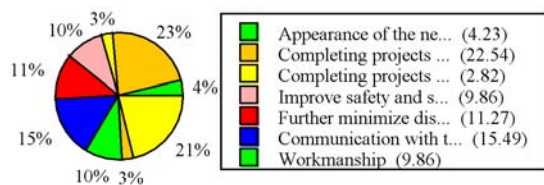
(as of Dec 4, 2006 3:39:54 PM)

2. Based on your experience or what you have witnessed, what three things need the most improvement?  
 Question Type: Multiple Choice

Answer	Percentage	Number of Entries
--------	------------	-------------------

Appearance of the new buildings	4.23%	3 entries
Completing projects on schedule	22.54%	16 entries
Completing projects within budget	2.82%	2 entries
Improve safety and security measures during construction	9.86%	7 entries
Further minimize disruptions to instruction by the Project Team	11.27%	8 entries
Communication with the school administration	15.49%	11 entries
Workmanship	9.86%	7 entries
Quality of materials	2.82%	2 entries
Budget for furniture, fixtures and equipment (FF&E)	21.13%	15 entries

**Total Entries = 71**



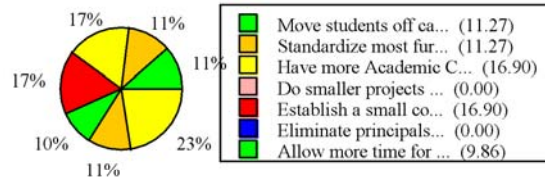
(as of Dec 4, 2006 3:39:54 PM)

**3. Which of the following would be the most beneficial from the school's perspective? (choose only 3 items)**

Question Type: Multiple Choice

Answer	Percentage	Number of Entries
Move students off campus during major construction projects	11.27%	8 entries
Standardize most furniture and equipment, but still let principals help pick colors	11.27%	8 entries
Have more Academic Construction Liasons so they can spend more time on each project	16.90%	12 entries
Do smaller projects over more years as opposed to larger projects in fewer years	0.00%	0 entries
Establish a small contingency for minor changes by the principal	16.90%	12 entries
Eliminate principals from the construction process altogether so they can focus on education	0.00%	0 entries
Allow more time for design to make sure all of the school's issues are addressed	9.86%	7 entries
Allow more time to complete the punch list and commission the buildings before occupancy	11.27%	8 entries
Add more security enhancements to the schools	22.54%	16 entries

**Total Entries = 71**



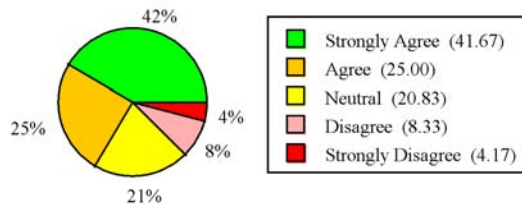
(as of Dec 4, 2006 3:39:55 PM)

4. Despite the school's efforts to overcome the challenges brought on by construction, onsite construction negatively impacts students' performance:

Question Type: Multiple Choice

Answer	Percentage	Number of Entries
Strongly Agree	41.67%	10 entries
Agree	25.00%	6 entries
Neutral	20.83%	5 entries
Disagree	8.33%	2 entries
Strongly Disagree	4.17%	1 entries

Total Entries = 24



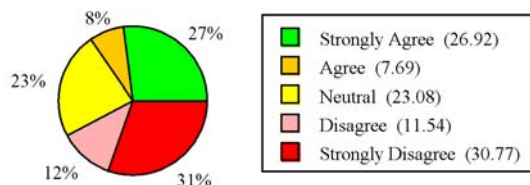
(as of Dec 4, 2006 3:39:55 PM)

5. Principals should be allowed to choose between having an ACL or having one of their APs serve in this capacity even though the AP may not have as much construction experience as an ACL:

Question Type: Multiple Choice

Answer	Percentage	Number of Entries
Strongly Agree	26.92%	7 entries
Agree	7.69%	2 entries
Neutral	23.08%	6 entries
Disagree	11.54%	3 entries
Strongly Disagree	30.77%	8 entries

Total Entries = 26



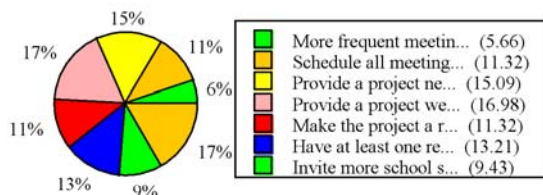
(as of Dec 4, 2006 3:39:55 PM)

**6. The best way to improve communications on projects are to (choose your top 3 answers):**

Question Type: Multiple Choice

Answer	Percentage	Number of Entries
More frequent meetings	5.66%	3 entries
Schedule all meetings after school hours	11.32%	6 entries
Provide a project newsletter	15.09%	8 entries
Provide a project website	16.98%	9 entries
Make the project a regular agenda item for each SAC meeting	11.32%	6 entries
Have at least one representative from the Project Team attend the school's staff meetings	13.21%	7 entries
Invite more school staff to the meetings	9.43%	5 entries
Other	16.98%	9 entries

**Total Entries = 53**



(as of Dec 4, 2006 3:39:55 PM)

**7. If you answered "other" in Question 6, please explain here.**

Question Type: Essay  
Total Number of Entries: 25

[\[click here for full results\]](#)

**Number of matches** **Keyword**

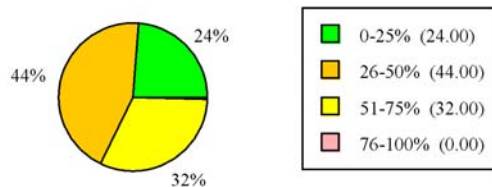
**8. The percentage of time a principal can expect to spend on construction issues when there is a major project on campus is:**

Question Type: Multiple Choice

Answer	Percentage	Number of Entries
0-25%	24.00%	6 entries
26-50%	44.00%	11 entries
51-75%	32.00%	8 entries

76-100% 0.00% 0 entries

**Total Entries = 25**



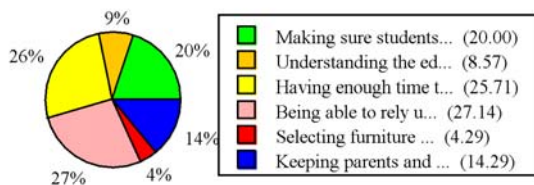
(as of Dec 4, 2006 3:39:56 PM)

**9. The most challenging part of being a principal with a major construction project is (choose your top 3 challenges):**

Question Type: Multiple Choice

Answer	Percentage	Number of Entries
Making sure students are kept safe	20.00%	14 entries
Understanding the educational specifications and floor plans	8.57%	6 entries
Having enough time to attend the meetings	25.71%	18 entries
Being able to rely upon the information that is given me	27.14%	19 entries
Selecting furniture and equipment	4.29%	3 entries
Keeping parents and staff informed and happy	14.29%	10 entries

**Total Entries = 70**



(as of Dec 4, 2006 3:39:56 PM)

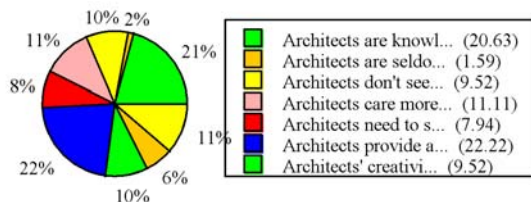
**10. Check the responses with which you most agree (choose all that apply).**

Question Type: Multiple Choice

Answer	Percentage	Number of Entries
Architects are knowledgeable and helpful.	20.63%	13 entries
Architects are seldom seen so I have no opinion of them.	1.59%	1 entries
Architects don't seem to understand education very well.	9.52%	6 entries
Architects care more about how a school looks than how it functions.	11.11%	7 entries
Architects need to spend more time explaining their designs to school administrators.	7.94%	5 entries
Architects provide and explain options which help me end up with a design that works well for my school.	22.22%	14 entries

Architects' creativity is stifled by too many regulations imposed by the District and others.	9.52%	6 entries
Architects need to be more creative when they propose design solutions.	6.35%	4 entries
Architects do a good job of fitting their design into the community.	11.11%	7 entries

**Total Entries = 63**



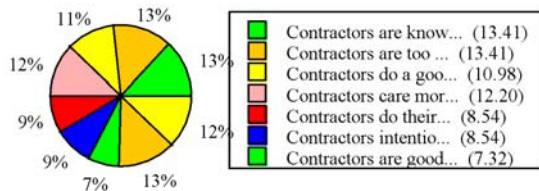
(as of Dec 4, 2006 3:39:57 PM)

**11. Check the responses with which you most agree (choose all that apply).**

Question Type: Multiple Choice

Answer	Percentage	Number of Entries
Contractors are knowledgeable and helpful.	13.41%	11 entries
Contractors are too optimistic when it comes to meeting completion dates.	13.41%	11 entries
Contractors do a good job of keeping me informed of what is about to take place in the coming days and weeks.	10.98%	9 entries
Contractors care more about cost than workmanship.	12.20%	10 entries
Contractors do their best to ensure the safety and security of the students.	8.54%	7 entries
Contractors intentionally provide incorrect or withhold information for one reason or another.	8.54%	7 entries
Contractors are good at following through on issues discussed at meetings.	7.32%	6 entries
Contractor selection processes should allow for the principal's participation.	13.41%	11 entries
Contractors need to improve their supervision of their workers.	12.20%	10 entries

**Total Entries = 82**



(as of Dec 4, 2006 3:39:58 PM)

## Write-in responses to Question 7

1 - Principals need honest and timely communication. Don't keep secrets from us hoping problems will go away. 2 - Move in dates need to be communicated realistically. 3 - Answer principals' questions.

---

Amount of communication is not the problem. Validity of communication (honest answers) is the problem.

---

I had excellent communication with my entire team. I feel very fortunate to have worked with a dynamic group of individuals from Tercilla-Courtemanche Architects, C.R. Klewin Builders and the SDPBC team of Glen Armbruster, Rob Crews, Steve Fleming and Pamela Horvath. I just wish I knew what FF&E money I was budgeted for and how that information can be better communicated.

---

Timelines with who is responsible for each part of the project along with contacts names and numbers for the school administrators.

---

Perhaps a timeline of completion dates, etc. may help plus a timeframe of what is expected when and by whom.

---

If the Principal wishes, an AP from the school should be assigned to the project. This will greatly increase communication and reduce the time spent by the Principal.

---

The communication to this point has been excellent by both Pirtle and district staff.

---

Have communication after an issue has been brought up and is resolved so the principal doesn't have to keep bringing up issues over and over and keeping track of them. Our meetings got very lax as the major construction got completed, and school board people "disappeared" to go on to other projects.

---

Use phone or email.

---

The main concern is the follow through with everything. An ACL needs to be appointed to no more than 1 or 2 projects and should be required to stay on site. The principal must be involved all along, because the principal is the ONLY person who sees all sides and impacts of each decision made. The principal cannot be the follow up person though. The district project coordinator usually has too many projects and cannot properly follow up either. Too many details of follow up on the part of the principal take the focus off of academic instruction, which negatively impacts student growth.