

TO KEEP YOU SAFE

this hurricane season and enable our drivers to restart essential services as soon as a storm passes, Waste Management offers the **following tips** to all residents and businesses:

BEFORE THE STORM:

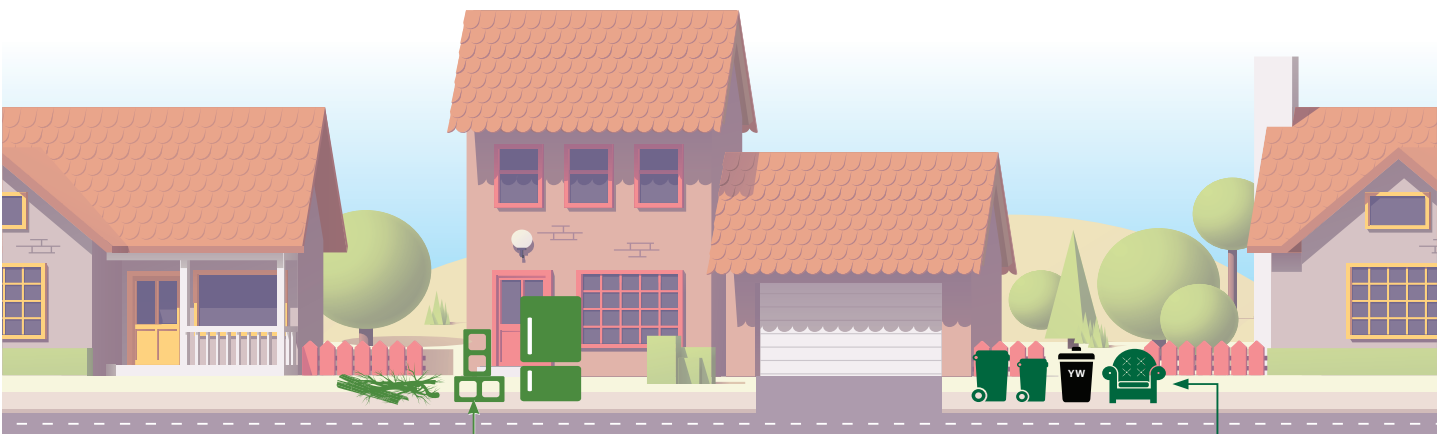
- **Trim** trees, hedges and all vegetation at the start of hurricane season in June and maintain your property throughout the season.
- **Stop** all yard maintenance and tree trimming activities and **DO NOT** place vegetative waste curbside within three (3) days of a hurricane warning.
- **Secure** garbage and recycling containers. Place empty containers in a secure location away from open spaces.
- Secure, **bundle** and **tie down** all loose trash such as tree limbs, wood planks or building and roof tiles on your property. Place these materials in a location where debris cannot become hazardous to homes, cars and property in high winds.
- Waste Management will continue to collect household garbage and recycling materials in the neighborhoods it serves according to designated schedules prepared by the Palm Beach County Solid Waste Authority.

AFTER THE STORM:

- After the storm passes, **separate** normal household garbage such as food waste, diapers and regular household trash from storm debris caused by high winds, hail and rain. Storm debris including tree limbs, carpet, roof tiles,

aluminum and wood fencing, and household appliances should be placed curbside in a **separate** pile or piles. Storm debris should not be placed within three (3) feet of fire hydrants, mailboxes, parked vehicles, or any sign or utility equipment.

- Separating normal household waste from storm debris will allow Waste Management employees to collect your household garbage more quickly and safely and help prevent odors and safety hazards.
- Separating regular household garbage from storm debris curbside is also necessary as in most communities in Florida. Waste Management is responsible for collecting regular household waste **ONLY** while other independent third-party companies are under contract with your local municipality to collect all storm debris.
- Waste Management will **restart** curbside garbage collection of normal household waste as **soon as it is safe** to do so, the streets that are passable and the Palm Beach County Solid Waste Authority approves restarting service.
- Typically, SWA will prioritize services post-storm and could temporarily suspend recycling, yard waste and normal household bulk collection in order to remove household garbage as quickly as possible.



Storm debris should be placed at the curb without blocking the roadway or storm drains. Be sure not to place debris near trees, poles, fire hydrants or other structures.

Storm Debris
Leaves, (do not put in bags), logs, plants, bushes, brush, and tree branches

Construction and Demolition Debris
Building materials, carpet, drywall, furniture, lumber, mattresses, and plumbing

Appliances and White Goods
Refrigerators, freezers, air conditioners, heat pumps, stoves, washers, dryers, and water heaters.
NOTE: Collection responsibility varies by community



Household trash and recycling
Waste Management will collect your regular household trash and recycling, containerized yard waste and non-storm-related bulk items



Before and after a major storm or hurricane, Waste Management will provide regular service updates through its website at www.wm.com. Please also check your city website for additional information.

THINK GREEN®