

School District of Palm Beach County

# Blue Lake Elementary School

Boca Raton, Florida



## Key Facts

Compact, 3-Story Single Building  
95,900 Square Feet  
971 Student Stations

## Project Timeline

May 21, 2020 *Design Kickoff*  
June 21, 2021 *Construction Commences*  
August 10, 2022 *First day of School*

## Cost

\$23,231,955 Total Construction Cost

## School Administration

Seth Moldovan, *Principal*

## Zyscovich Team

Jose Murguido  
Michael McGuinn  
Juan Socorro  
Michael Ehrling  
Anabella Smith  
Martha Garrido  
Martha Padreda

## Consultant Team

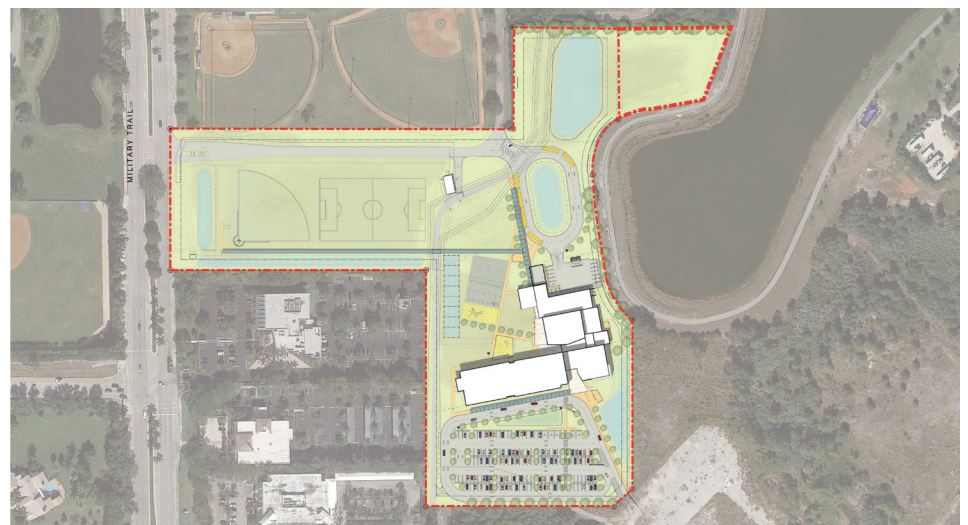
DiFonte Consulting, Inc.  
RGD Consulting Engineers  
JLRD, Inc.  
Schmidt Nichols Landscape Architecture  
Moss & Associates

The School District of Palm Beach County and the City of Boca Raton collaborated on developing a new elementary school campus in the heart of Boca Raton, Florida. The City carved out a 15-acre parcel from an undeveloped portion of its Spanish River Athletic Park that sits adjacent to the Don Estridge High Tech Magnet Middle School campus and worked closely with the District to mitigate utilities, as well as site and traffic considerations to relieve overcrowding in the neighboring communities.

Zyscovich's initial master plan of the site guided the subsequent programming and design of the new facility. The design responds to a complex and uniquely shaped site with a compact footprint and vertical educational solution.

The team used a "right-sizing" approach, balancing educational programmatic needs with available systems and market pricing, while still designing a facility below the limit of Florida Department of Education Student Station Construction Cost requirements.

[More >](#)



# BLUE LAKE ELEMENTARY SCHOOL

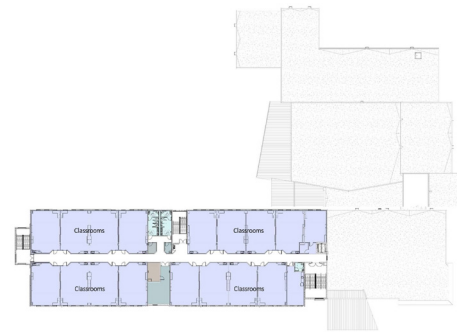
The new Blue Lake Elementary School includes space for 971 student stations, in a three-story, 95,900 SF facility. The site also includes exterior playgrounds, playfields, 156 parking spaces, 1850 feet of queuing, and room for future expansion. The new prototype design also incorporates an arts boulevard with a music and art suite sitting adjacent to a multi-purpose dining and performance space, an integrated second floor STEM Media Center Lab and various learning and classrooms spaces dispersed throughout the three levels.

The 21st Century Learning environment is planned to accommodate flexible group, peer-to-peer, and individualized learning activities where students are encouraged to explore, learn, innovate, and engage more. Moveable furniture and equipment will allow for varied learning experiences, tailored to each classroom's specific curriculum or student group. Flexibility and adaptability within the community context were key drivers in the planning, programming, and design.

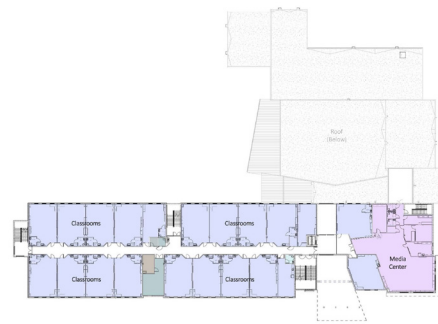
This unique learning environment houses students from five to eleven years of age, the premium years in a child's social and intellectual development. To facilitate a positive learning environment with appropriate social interaction, Blue Lake is divided up into smaller learning communities, or "nests."

These Nested Learning Communities are more personal and differentiated with coordinated finish colors, offering a sense of "smallness within largeness." Teachers and children can personalize their areas of the building through gallery walls, tackboards and display cases, creating a sense of ownership and pride among students.

Each grade level area of the building has been designed to be flexible to meet the specific needs of their educational curriculum goals while providing a place of safety, identity, and ownership creating life-long learners.



Third Floor



Second Floor



First Floor

- ADMINISTRATION
- CLASSROOMS
- DATA
- DINING
- ELECTRICAL
- FIRE STORAGE
- MECH/CUST
- MEDIA
- MUSIC/ART
- PE AREA
- RESTROOM

