

HIGHWAY TO HIGH SCHOOL AND BEYOND...



AGENDA FOR THIS EVENING

➤ **Welcome**

Dr. Vela, Principal

➤ **Presentation**

**Mr. Lanier, Assistant
Principal for Curriculum**

Mr. Rick Dewalt

School Counseling Director

Mrs. Lanier

Academy Coordinator

➤ **Question & Answer Period**

Park Vista Community High School

- Opened doors August 2004 as a comprehensive high school
- 800 Freshmen + 758 Sophomores + 743 Juniors + 784 Seniors = 3085 total students
- 250 Faculty & Staff
- 2 choice academy programs: Auto Service & Auto Collision
- 2 in-house academy programs: Medical, Multimedia Communications
- Ranked 347 in the country out of over 22,000 public high schools in the United States according to the Washington Post's America's Top High School's list.
- Students attending 4-year colleges: 63%
- Students attending 2-year colleges: 30%
- An "A" rated school by the State of Florida
- A University of Cambridge Centre since 2010



OUR MISSION

Parents....please partner with us in developing your child. Soon, they will be moving from middle school to high school and then into college, the military, vocational school or the work force. Let's help them become problem solvers and be able to advocate for themselves. Working together, we can make them as prepared as possible for the next chapter in their lives.

Our purpose is to
prepare, engage, and
inspire our LEARNERS
to be their best in a
quickly changing global
community.

Middle School vs High School

Middle School

- Six class periods per day
- GPA does not carry over year to year
- Points for promotion
- Size of school
 - Woodlands has 1578 students
 - Christa has 1466 students
 - Don Estridge has 1229 students
- Credit recovery program each quarter
- Nine weeks tests
- 11-14 year olds

High School

- Seven class periods per day
- GPA is cumulative
- Credits for graduation
- Size of school
 - Park Vista has 3085 students
- NO SUMMER SCHOOL
- Semester exams & EOCs
- 14-20 year olds

Daily Schedule

Your child will be receiving a color coded calendar!

Park Vista High School has 7 period days where each class meets that day and block period days that are either “even” or “odd”. On “even” days periods 2, 4, 5, 6 meet and on “odd” days periods 1, 3, 5, 7 meet. As you can see, period 5 meets each day. It is the common period.

BLOCK DAY

Per 1/2 7:30 – 9:15 (105 min)

Per 3/4 9:21 – 11:06 (105 min)

Per 5 11:12 – 12:09 (57 min)

Lunch 12:09 – 12:54 (45 min)

Per 6/7 1:00 – 2:45 (105 min)

7 PERIOD DAY

Per 1 7:30 – 8:20 (50 min)

Per 2 8:26 – 9:16 (50 min)

Per 3 9:22 – 10:12 (50 min)

Per 4 10:18 – 11:08 (50 min)

Per 5 11:14 – 12:08 (54 min)

Lunch 12:08 – 12:53 (45 min)

Per 6 12:59 – 1:49 (50 min)

Per 7 1:55 – 2:45 (50 min)

CLUBS ON CAMPUS



Academic Team

Best Buddies

Junior Class

Dance Team

English Honor Society

First Priority

Green Spaces

Jewish Student Union

Model UN

National Honor Society

Quill and Scroll Honor Society

Science Honor Society

Special Olympics Athletes

Think Pink

Latinos in Action



Art Club

Chemistry Club/Science Olympiad

Sophomore Class

Debate Team

Florida Future Educators of America

French Honor Society

Habitat for Humanity

Key Club

Mu Alpha Theta (Math Honor Society)

National Technical Honor Society

Rho Kappa (Social Studies Honor Society)

SECME

Special Olympics Volunteers

Writer's Workshop

Black Student Union



Automotive Club

Seniors Class

Freshmen Class

Drama Club

Film Club

Gay Straight Alliance

HOSA

M-Power (Psychology Club)

Multicultural Club

Paw Protection

SADD /SWAT

Spanish Honor Society

Strategic Games Club

Young Politicians



ATHLETICS



BOYS
Baseball
Basketball
Bowling
Cheerleading
Cross Country
Diving
Football
Golf
Lacrosse
Soccer
Swimming
Tennis
Track & Field
Volleyball
Weightlifting
Wrestling

GIRLS
Basketball
Bowling
Cheerleading
Cross Country
Diving
Flag Football
Golf
Lacrosse
Soccer
Softball
Swimming
Tennis
Track & Field
Volleyball

For more information, visit the athletics section of our website at www.pvchs.com

CLASS OF 2027 GRADUATION REQUIREMENTS

BELOW ARE THE MINIMUM REQUIREMENTS NEEDED FOR HIGH SCHOOL GRADUATION. STATE OF FLORIDA UNIVERSITY ADMISSIONS HAVE ADDITIONAL ACADEMIC REQUIREMENTS INCLUDING A MINIMUM OF 18 ACADEMIC CREDITS TO INCLUDE AT LEAST 4 CREDITS IN MATH AT OR ABOVE THE ALG I LEVEL IN ADDITION TO TWO YEARS OF THE SAME FOREIGN LANGUAGE.

I. A total of 24 credits are needed for graduation. These credits must include:

ENGLISH:	4 CREDITS
MATHEMATICS:	4 CREDITS (must include Algebra I & Geometry credits)
SCIENCE:	3 CREDITS (must include 1 Biology and 1 Physical Science credit)
SOCIAL STUDIES:	3 CREDITS (must include 1 World History, 1 American History, ½ American Government, ½ Economics credit)
PHYSICAL EDUCATION:	1 CREDIT (½ credit of PERSONAL FITNESS and ½ credit of a P.E. class or 1 credit of HOPE)
PERFORMING/FINE ART:	1 CREDIT
ELECTIVES:	<u>8 CREDITS</u>
	24 CREDITS TOTAL

- II. A cumulative grade point average of 2.0 is needed in ALL high school credit courses.**
- III. A passing score is needed on the 10th grade FSA ELA & Algebra I EOC.**
- IV. 20 hours of community service/volunteer hours completed in high school are required before graduation.**
- V. Completion of one ONLINE course.**

VOLUNTEER/COMMUNITY SERVICE HOURS

- 20 are needed for graduation
- Can begin accumulating hours after 8th grade
- Bright Futures Scholarship Program requires 30 for the GSV, 75 for the FMS and 100 for the FAS
- Students can volunteer at almost any not-for-profit organization
- Go to www.volunteens.com for ideas and opportunities
- The form to document the hours can be found on our website or in the School Counseling Office

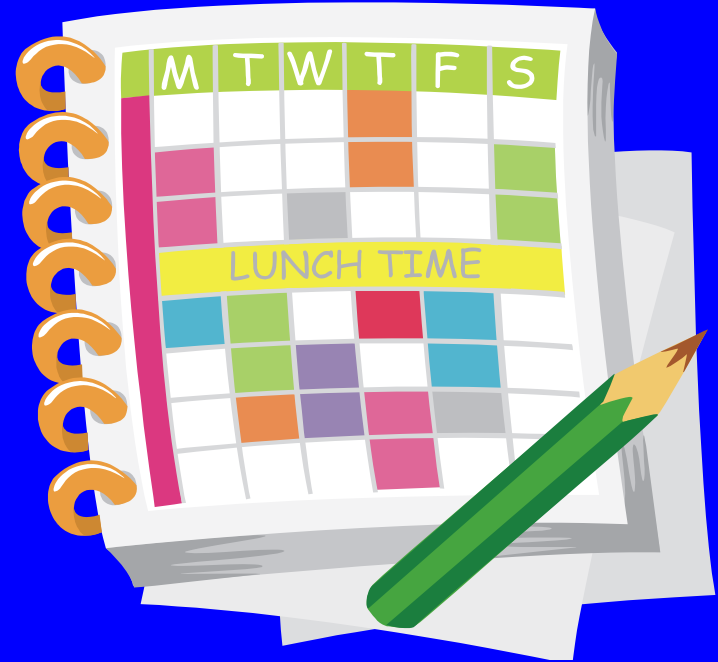
ONLINE LEARNING OPPORTUNITIES

- Students must earn course credit in at least one course through online learning. To meet the requirement, a student must take and pass a full course virtually. A “full” course is defined as the complete and maximum amount of credit for a course as defined in the FLDOE course code directory
- Most students use www.flvs.net



TYPICAL 9TH GRADE CLASS SCHEDULE

1. *English*
2. *Math*
3. *Science*
4. *Social Studies*
5. *Elective/Academy*
6. *Elective*
7. *Elective*



IMPORTANCE OF GRADES

- ✓ Handing in classwork/homework = good grades.
- ✓ Colleges look at grades from freshman – junior years as well as the rigor of the senior year, so start out strong!
- ✓ Student athletes and club members must maintain at least a 2.0 cumulative GPA to participate.
- ✓ Students have to repeat a required course if they fail it.
- ✓ Time management is important. Practice now by staying current with learning and workload in 8th grade.
- ✓ Grade point averages are CUMULATIVE and begin with the first high school course taken even if it is in middle school.

FRESHMAN YEAR IS IMPORTANT!!!!

HOW ARE GRADE POINT AVERAGES (GPA) AND HONOR POINT AVERAGES (HPA) CALCULATED?

ALL LETTER GRADES ARE AWARDED POINTS

Regular Classes

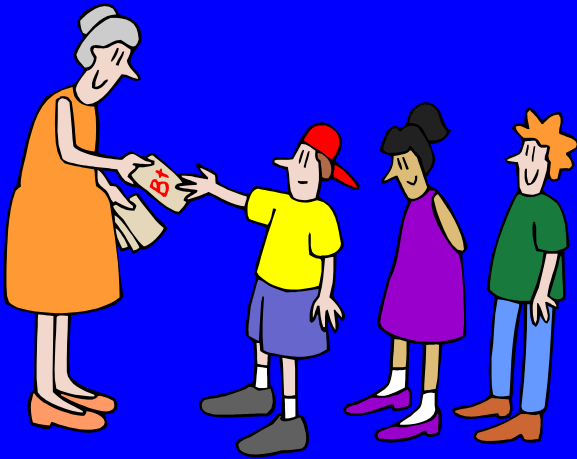
A = 4.00

B = 3.00

C = 2.00

D = 1.00

F = 0.00



Honors/Pre-AP/Pre-AICE Classes

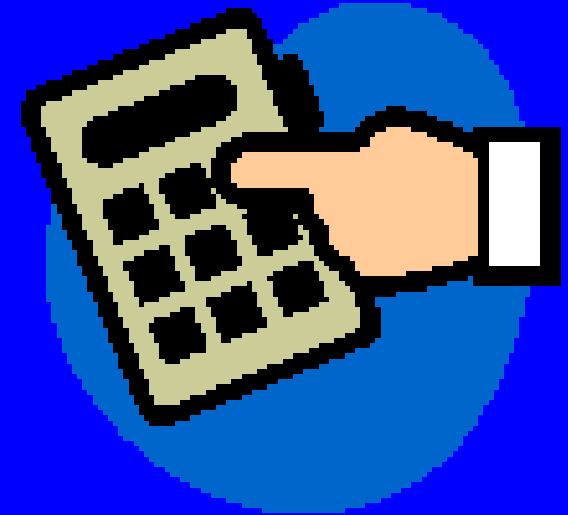
A = 4.500

B = 3.375

C = 2.250

D = 1.125

F = 0.000



Advanced Placement/AICE/Dual Enrollment Classes

A = 6.00

B = 4.50

C = 3.00

D = 1.50

F = 0.00

EXAMPLE #1

ALL REGULAR CLASSES

ENGLISH REG	B	3.00
MATH REG	C	2.00
SCIENCE REG	A	4.00
SOCIAL STUDIES REG	D	1.00
ELECTIVE REG	C	2.00
ELECTIVE REG	A	4.00
ELECTIVE REG	A	4.00
TOTAL POINTS		20.00

GRADE POINT AVERAGE = $20.00 / 7 = 2.8571$

HONOR POINT AVERAGE = **2.8571** (SAME BECAUSE OF NO HONOR OR AP/AICE CLASSES)

EXAMPLE #2

MIX OF REG, HON & AP/AICE

		<u>GPA</u>	<u>HPA</u>
ENGLISH AP/AICE	A	4.000	6.000
MATH HONORS	C	2.000	2.250
SCIENCE HONORS	A	4.000	4.500
SOCIAL STUDIES HONORS	A	4.000	4.500
ELECTIVE REG	C	2.000	2.000
ELECTIVE REG	A	4.000	4.000
ELECTIVE REG	A	4.000	4.000
TOTAL POINTS		24.000	27.25 (WEIGHTING)

GRADE POINT AVERAGE = $24.000 / 7 = 3.4286$

HONOR POINT AVERAGE = $27.25 / 7 = 3.8929$

Take FSA/ELA Seriously!!

- It will determine Intensive Reading, Honors, AICE, AP, etc for 9th grade.
- You need a score on FSA/ELA of a Level 3, 4 or 5 to enroll in AICE English or AICE Social Studies in grade 8.
- All Reading Level 1 and 2 students will be placed into Intensive Reading.

HIGH STAKES TESTING

Agree with it or not, it is here!!!!

HIGH SCHOOL TESTS

FSA ELA 9th (being replaced)

FSA ELA 10th (being replaced)

Algebra I EOC

Geometry EOC

US History EOC

Biology EOC

COLLEGE READY TESTS

PSAT

SAT

ACT

P.E.R.T.

OTHER TESTS FOR HIGH SCHOOL STUDENTS.....

Industry Certifications

Advanced Placement

A.I.C.E.

SAT Subject Area Tests

AND AFTER HIGH SCHOOL.....

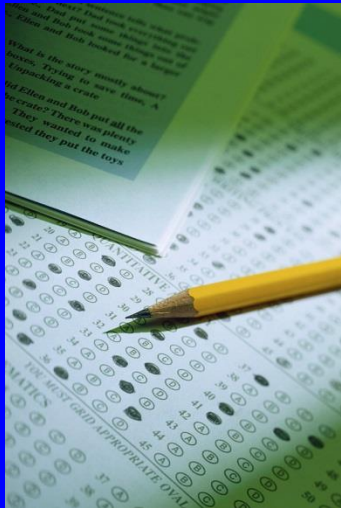
GRE

LSAT

MCAT

BOARD TESTING

ETC, ETC, ETC, ETC.....



What does the first year in high school look like academically?

Required courses will be selected by Park Vista Community High School using established guidelines. All FSA/ELA Level 3/4/5 students will be placed in one of the two University of Cambridge AICE diploma program pathways as prescribed by PVCHS administration and supported by the SDPBC.

REQUIRED COURSES	FSA ELA Level 1/2	FSA ELA Level 3/4/5	CAAPP Cobra AICE AP Program (Level 4/5, at least Alg 1 Hon, and Span/French 1)
LANGUAGE ARTS	ENGLISH 1 (1001310)	AICE GEN PAPER (1009400)	AICE GEN PAPER (1009400A)
SOCIAL STUDIES	WORLD CULTURAL GEO (2103300)	AICE THINKING SKILLS (1700372)	AICE THINKING SKILLS (1700372A) AICE INTERNATIONAL HISTORY (2100490A)
MATH	ALG 1 (1200310) ALG 1 HON (1200320) GEO (1206310) GEO HON (1206320) ALG 2 HON (1200340)	ALG 1 (1200310) ALG 1 HON (1200320) GEO (1206310) GEO HON (1206320) ALG 2 HON (1200340)	GEOMETRY HON (1206320A) ALG 2 HON (1200340A) PRECALCULUS HON (1202340)
SCIENCE	PHYSICAL SCIENCE (2003310)	PHYSICAL SCI HON (2003320) BIOLOGY HON (2000320)	BIOLOGY HON (2000320A)
ADDITIONAL COURSE	INTENSIVE READING (1000412)	ELECTIVE 1 - FOREIGN LANGUAGE IS NOT REQUIRED BUT STRONGLY RECOMMENDED (SEE REVERSE SIDE)	PRE-AICE SPAN 2 (0708534) PRE-AICE SPAN 3 (0708536) PRE-AICE FRENCH 2 (0701396) PRE-AICE FRENCH 3 (0701398)
ELECTIVES	ELECTIVE 1	ELECTIVE 2	ELECTIVE 1
	ELECTIVE 2	ELECTIVE 3	

Why earn an AICE diploma?



AICE & AP curriculum helps students graduate from college on time....

- Students who take AP/AICE courses and exams are much more likely than their peers to complete a college degree on time.
- **Only one in four students who enter college complete a bachelor's degree in four years.**
- A recent study showed that students taking AP courses and exams were much more likely to earn a college degree in four years.
- For example, AP English Literature students had four-year college graduation rates that were 62% higher than students that had not taken AP English Literature.



6 YEAR GRADUATION RATES AT THE TWELVE STATE UNIVERSITIES

FAMU = 47%

FGCU = 48%

FLPOLY = N/A (NEW)

NCF = 65%

UF = 88%

USF = 71%

FAU = 51%

FIU = 56%

FSU = 80%

UCF = 70%

UNF = 57%

UWF = 42%

If these are their 6 year graduation rates, what do their 4 year graduation rates look like?

BRIGHT FUTURES SCHOLARSHIPS

Earn an AICE Diploma, Earn 100% Tuition & Fees

	Florida Academic Scholarship	Florida Medallion Scholarship
Award Amount Per Year (30 Credits)	100% tuition & fees (\$300 per semester for books is pending)	75% tuition & fees
Weighted GPA Required	3.5	3.0
Test Scores	SAT = 1330 ACT = 29	SAT = 1210 ACT = 25
Community Service Hours	100	75

40 Point Increase from 2020 Seniors

What is AICE / CAAPP?

- An international, pre-university program developed by the University of Cambridge in England
- Examinations have been offered for over 50 years in more than 150 countries and 9000 schools (including 40 HS in Florida)
- AICE first offered in the US in 1995, and officially adopted in Florida in 2001
- PVCHS became an official Centre in August of 2010 as an avenue for Park Vista students to expand learning opportunities to increase learning for our global society
- AICE Diploma is awarded based on competence in seven subjects; however, students can take and be awarded for individual subjects
- Curriculum designed as preparation for college and university programs



Sample Schedule for CAAPP

- **9th Grade (2 AICE Courses)**
 - **AICE General Papers**
 - **AICE International History**
 - **AICE Thinking Skills**
 - Pre-AP Biology I Honors
 - CAAPP Algebra II Hon or Geometry Hon
 - PRE-AICE Span/French II Hon
 - Elective (can include Academy/Band/PE)
- **10th Grade (3 AICE Courses)**
 - **AICE English Language I**
 - **AICE Global Perspectives**
 - **AICE Environmental Management**
 - Pre-Calculus Honors or Algebra II Honors
 - CAAPP Chemistry Honors
 - PRE-AICE Spanish/French III Honors
 - Elective
- **11th Grade (At least 2 AICE Courses)**
 - **AICE English Lit AS**
 - **AICE Marine Science**
 - AP US History
 - Mathematics
 - Academic Elective
 - Academic Elective
 - Elective
- **12th Grade**
 - AP English Literature
 - AP US Government / Microeconomics
 - Mathematics (AP Calculus, AP Statistics)
 - Science (AP Chemistry, AP Biology, AICE Marine, AP Physics)
 - Academic Elective
 - Academic Elective
 - Elective



YOU MUST HAVE COMPLETED ALGEBRA I & SPANISH I or FRENCH I BY THE END OF 8th Grade

If you are currently not in ALGEBRA I & SPANISH I or FRENCH I at your school for 8th grade, ask your school counselor if you are eligible to add it to your schedule for 8th grade. You must complete ALGEBRA I & SPANISH I or FRENCH I, at least, in your 8th grade year. ***WE DO NOT RECOMMEND THIS BE DONE VIA ONLINE COURSES.***

“While knowing English is an advantage in today’s world, knowing only English is probably not enough because individuals, companies and countries are competing with those who speak English and another language.”

Fred Genesee, Professor Emeritus, McGill University



Why AICE? CAAPP Testing Data

	2014	2015	2016	2017	2018	2019	2020 COVID	2021 COVID
# AICE EXAMS GIVEN TO CAAPP STUDENTS	470	472	472	628	776	737	944	837
PASS RATE	93%	94.5%	95.5%	92.5%	91.5%	93%	89%	96%
# COLLEGE CREDITS EARNED	1311	1338	1353	1743	2328	2211	2521	2411
\$ VALUE AT A STATE UNIVERSITY IN FL	\$278,285	\$284,016	\$286,836	\$369,987	\$494,165	\$468,732	\$534,342	\$511,039

Remember that these numbers DO NOT include AICE courses taken by students not in CAAPP or any Advanced Placement courses.

CAMBRIDGE

INTERNATIONAL EXAMINATIONS

Valedictorian



Matthew Finkelstein

GPA: 5.3777

Jewish Student Union, National Honor Society, Mu Alpha Theta (Math Honor Society), Academic Challenge Team Four years varsity Track and Field (Captain senior year), two years varsity Cross Country. AICE Diploma with Distinction, AP Scholar with Honor, Pathfinder Nominee in category of academic excellence

Favorite Moment at PVCHS: Competing with Track & Field team at Miami Southridge Invitational as a sophomore and returning to school after over a year of online learning.



Salutatorian



Tristan Guillaume

GPA: 5.3235

National Honor Society President, National English Honor Society President, and Registration Coordinator of HOSA, Captain of Park Vista Boys Varsity Soccer, Creator and Host of C-Chat with Tristan Podcast in which young Christians tackle prominent questions regarding faith.

Favorite Moment at PVCHS: I have had a lot of great memories at Park Vista but I would say my favorite was performing for powderpuff during the Homecoming game my senior year! Going into high school, powderpuff was an experience I wanted to participate in. There was not a moment in which we weren't laughing. Our Coaches came up with fun moves and allowed for the guys' input. It was an overall great memory.



Salutatorian



Tiffany Quach

GPA: 5.3235

Key Club, Think Pink, Math Honor Society, Spanish Honor Society, Science Honor Society, National Honor Society, President of Key Club, Vice President of Spanish Honor Society, Secretary of Think Pink. Varsity flag football and varsity soccer. Leadership Grow junior year and was recognized as one of the top state rushers as a freshman for flag football

Favorite Moment at PVCHS: Favorite moment at Park Vista would have to be winning the scoring touchdown at the powderpuff game against the juniors.



**Our 2022
Valedictorian and our
Co-Salutatorians are
all CAAPP students
and AICE Diploma
recipients too!**



UNIVERSITY of CAMBRIDGE
Local Examinations Syndicate

Sample Schedule for FSA Level 3/4/5 Students Not In CAAPP

- **9th Grade (2 AICE Courses)**

- AICE General Papers
- AICE Thinking Skills
- Math
- Science
- Elective (can include Foreign Language)
- Elective (can include Academy/Band/PE)
- Elective

- **10th Grade (3 AICE Courses)**

- AICE English Language I
- AICE Global Perspectives
- AICE International History
- Math
- Science
- Elective
- Elective

- **11th Grade (3 AICE Courses)**

- AICE English Lit AS
- AICE Environmental Science
- AICE (or AP) US History
- Mathematics
- Academic Elective (AICE if taking AP US History)
- Academic Elective
- Elective

- **12th Grade**

- AP English Literature
- AP US Government / Microeconomics
- Mathematics (AP Calculus, AP Statistics)
- Science (AP Chemistry, AP Biology, AICE Marine, AP Physics)
- Academic Elective
- Academic Elective
- Elective



CAMBRIDGE

INTERNATIONAL EXAMINATIONS

AICE & AP TESTING DATA FOR ALL PV STUDENTS

	2015	2016	2017	2018	2019	2020 COVID	2021 COVID
# AICE & AP EXAMS GIVEN TO ALL STUDENTS	2159	2826	3508	3693	3998	3869	3952
PASS RATE	72%	70%	69%	67%	65%	72.8%	68.17%
# COLLEGE CREDITS EARNED	4656	5967	7262	7407	7770	8445	8082
\$ VALUE AT A STATE UNIVERSITY IN FL	\$988,326	\$1,265,004	\$1,541,411	\$1,572,188	\$1,649,237	\$1,792,510	\$1,715,461



CAMBRIDGE

INTERNATIONAL EXAMINATIONS

All 12 state universities in Florida, 100% of Ivy League universities, and over 450 private and out-of-state universities across the U.S. accept AICE credits-by-exam.

STATE UNIVERSITY SYSTEM OF FLORIDA AICE EQUIVALENCY (PASSING GRADES OF A, B, C, D, E)

	FAMU TALLAHASSEE WWW.FAMU.EDU	FAU BOCA RATON WWW.FAU.EDU	FGCU FT. MYERS WWW.FGCU.EDU	FIU MIAMI WWW.FIU.EDU	FLPOLY LAKELAND WWW.FLORIDAFLORIDA.EDU	FSU TALLAHASSEE WWW.FSU.EDU	NCF SARASOTA WWW.NCF.EDU	UCF ORLANDO WWW.UCF.EDU	UF GAINESVILLE WWW.UFL.EDU	UNF JACKSONVILLE WWW.UNF.EDU	USF TAMPA WWW.USF.EDU	UWF PENSACOLA WWW.UWF.EDU
ART & DESIGN	ART 1210C (3)	DISCRETION OF FACULTY (3)	ART 1201 (3)	ART UC11 (3)	DISCRETION OF FACULTY	ART 1300C (3)	ACCEPTED W/SCORE OF A, B, C, D, E	ART1906 (3)	ART 2305C	DISCRETION OF INSTITUTION	ARH 2933 (3)	ARTLXXI (3)
CHEMISTRY AS	CHM1025 OR 1020/1020L (4)	CHM1020, 1020L (4)	CHM1020, CHM1XXL OR CHM 1025, 1XXL	CHM1020/1020L (4)	CHM X045/X045L (4)	CHM1020, 1020L (4)	CHM X303C OR CHM X030202L OR CHM X03025C OR CHM X035025L (4)	CHM1020/1020L (4)	CHM1020, CHM1000 (4)	CHM1020C OR CHM1025C (4)	CHM0330, 2020L (4)	CHM1020, 1020L (4)
DRAMA	TBD	TBD	TBD	TBD	TBD	TBD	TBD	TBD	TBD	TBD	TBD	TBD
GENERAL PAPER AS	IDS 3040(3)	IDS 1110 (3)	IDS 1XXX (3)	ELE UC11 (3)	IDS 1110 (3)	IDS 2*** (3)	IDS X110 (3)	IDS 1110 (3)	IDS L000 (3)	IDS 1110 (3)	IDS 2110 (3)	IDS 1110 (3)
ENG LANG AS	ENC1101 (3)	ENC 1101 (3)	ENC 1101 (3)	ENC 1101 (3)	ENC 1101 (3)	ENC 1101 (3)	ENCX101 (3)	ENC 1101 (3)	ENC 1101 (3)	ENC 1101 (3)	ENC 1101 (3)	ENC X101 (3)
ENG LIT AS	ENC 1101 OR 1102 (3)	ENC 1101 (3) OR ENC 1102 (3)	ENC 1101 (3) OR ENC 1102 (3)	ENC 1101 (3) OR ENC 1102 (3)	ENC 1101 (3) OR ENC 1102 (3)	ENC 1101 (3)	ENCX101 OR ENCX102 (3)	ENC1101 or ENC1102 (3)	ENC 1102 (3)	ENC 1101 (3) OR ENC 1102 (3)	ENC 1101 (3)	ENC 1101 (3) OR ENC 1102 (3)
INTERNATIONAL HISTORY AS	WOH 1012 (3)	TBD	HIS 1XXX (3) OR WOH 1XXX (3)	WOH 2001 (3)	WOH 1040 (3)	WOH 2030 (3)	HIS X026 OR WOH X040 (3)	WOH 2040 (3)	WOH 2040 (3)	HIS 1206 OR WOH 1040 (3)	WOH 2040 (3)	HIS 1206 (3) OR WOH 1040 (3)
FRENCH LANGUAGE	FRE 1120 (3)	FRE 1121 (4)	FRE 2220C (4)	FRE 2200 (3)	3 CREDITS OF LANGUAGE	FRE 2220 (4)	3 CREDITS OF LANGUAGE AT INTERMED. LEVEL	FRE 1121C (3)	FRE 2220 (4)	3 CREDITS OF LIT SURVEY CREDIT	FRE 1120 (4)	FRE 2200 (3)
GLOBAL PERSPECTIVES AS	ISS 2102 (3)	ISS 1011 (3) OR ISS 1013 (3)	ISS 2011 (3)	SOC UC11 (3)	ISS 1011 or ISS X013 (3)	INR 2*** (3)	ISSX011 OR ISSX013 (3)	ISS 1011 (3)	ISS L000 (3)	ISS 1011 OR ISS 1013 (3)	ISS 1011 (3)	ISS 1011 (3) OR ISS 1013 (3)
US HISTORY AS	AMH 2010 (3)	DISCRETION OF FAU	AMH 1XXX (3)	AMH2041 (3)	AMH X029 (3)	AMH 2*** (3)	AMH X029 (3)	AMH 2042 (3)	AMH L000 (3)	AMH 1042 (3)	AMH 2029 (3)	AMH 1042 (3)
SOCIOLOGY 1 AS	SYG 2000 (3)	TBD	SYG 2000 (3)	SYG 2000 (3)	SYG X000 (3)	SYG1000 (3)	SYG X000 (3)	SYG 2000 (3)	SYG 2000 (3)	SYG 2000 (3)	SYG 2000 (3)	SYG 2000 (3)
ENV MGMT AS	EVR 1001 OR ISC 2050(3)	EVR 2017 (3)	EVR 1001C (3)	EVR 1001 & EVR 1001L (4)	EVR 1001C or EVRX001, X001L or ISC XXXX (3)	EVR 1001C (4)	EVR X001C OR EVRX001, X001L OR ISCXXX (3)	EVR 1001C (3)	EVR2001 & EVR L000 (4)	EVR 1001C (3) OR ISC 1051 (3)	EVR 2001 (3) & EVR 2001L (1)	EVR2001 (3)
MARINE AS	OCE 1001 (3)	OCE 2001 (3)	OCE 1001C (3)	GLS UC11 (3)	OCE 1001 (3)	OCE 1001 (3)	OCEX001 (3)	OCE 1001 (3)	OCE 1001 (3)	OCE 1001 (3)	OCE 2001 (3)	OCE X001 (3)
MARINE A	OCE 1001 (3) & OCB 2011 (3)	OCE 2001 (3) OR OCB 2000 (3)	OCE 1001C & OCB 1XXX (6)	OCE 2001 & ELE UC11 (6)	OCE 1001 & OCB 1000 (6)	OCE 1001 (3) & OCB 2*** (3)	OCEX001 AND OCEX000 (6)	OCE 1001 & OCB 1000 (6)	OCE 1001 & OCB L000 (6)	OCE 1001 (3) & OCB 1000 (3)	OCE 2001 (3) & OCB3000 (3)	OCE X001 & OCB X000 (6)
MEDIA STUDIES	TBD	TBD	DIG X000 (3)	ELE UC11 (3)	DIG 1000 (3)	DIG 1000 (3)	DIG X000 (3)	DIG 1000 (3)	DIG 1000 (3)	DIG 1000 (3)	DIG 1000 (3)	DIG 1000 (3)
MUSIC	MUH 2051 (3)	MUH1001 (3)	MUH1XXX (3)	MUL1010 (3)	N/A	MUH 2010 (3)	MUH X001 (3)	MUH1001 (3)	MUH L000 (3)	MUH1001 (3)	MUH 1001 (3)	MUH1001 (3)
SPANISH LANG	SPN 2220 (3)	SPN 1121 (3)	SPN 2220C (4)	SPN 2200 (5)	FL CREDIT (3)	SPN 2220 (4)	1 SEMESTER OF LANGUAGE CREDIT INTERMED. LEVEL (3)	SPN 1121C (4)	SPN 2200 (4)	1 SEM LANG CREDIT (3)	SPN 1120 (4)	SPN 2200 (3)
TRAVEL & TOURISM 1 AS	HFT 1000 (3)	HFT 1000 (3)	HFT 1000 (3)	HFT X000 (3)	HFT X000 or X700 (3)	HFT 3000 (3)	HFT X000 OR HFT X700 (3)	HFT 1000 (3)	HFT L000 (3)	HFT 1000 (3) OR HFT 1700 (3)	HFT 3700 (3)	HFT 2000 (3)
THINKING SKILLS	PHI 2010 (3)	PHI 2100 (3)	PHI 1XXX (3)	PHI 2103 (3)	PHI X103 or PHI X401 (3)	PHI 2*** (3)	PHIX03 OR PHIX401 (3)	PHI 1103 (3)	PHI L000 (3)	PHI 1103 OR PHI 1401 (3)	PHI 1103 (3)	PHI 2103 (3)



CAMBRIDGE

INTERNATIONAL EXAMINATIONS

All 12 state universities in Florida and nearly all U.S. colleges and universities and many international institutions honor AP scores. Most have a written policy spelling out how they award credit and advanced placement.

STATE UNIVERSITY SYSTEM OF FLORIDA ADVANCED PLACEMENT EQUIVALENCY (PASSING GRADES OF 3, 4, OR 5)

	FAMU TALLAHASSEE WWW.FAMU.EDU	FAU BOCA RATON WWW.FAU.EDU	FGCU FT MYERS WWW.FGCU.EDU	FIU MIAMI WWW.FIU.EDU	FLPOLY LAKELAND WWW.FLORIDAPOLY.EDU	FSU TALLAHASSEE WWW.FSU.EDU	NCF SARASOTA WWW.NCF.EDU	UCF ORLANDO WWW.UCF.EDU	UF GAINESVILLE WWW.UF.EDU	UNF JACKSONVILLE WWW.UNF.EDU	USF TAMPA WWW.USF.EDU	UWF PENNSACOLA WWW.UWF.EDU	
ENG LIT & COMP	3: ENCL101 or LIT110 or ENL 203 or AML 203 (3) 4: ENCL101, 1102 or ENCL102, LIT110 (6)	3: ENCL101 or LIT105 (3) 4: ENCL101, 1102 or ENCL102, LIT105 (6)	3: ENCL101 (3) or LIT 200 (3) 4: ENCL101, 1102 or LIT200 (6)	3: ENCL101, LIT 1000 (3) 4: ENCL101, 1102, LIT1000 (9)	3: ENCX101 or course in AML, ENL, or LIT (3) 4: ENCX101 and ENCX102 or LITX005 (6)	3: ENCL101 (3) 4: ENCL101, LIT2000 (6)	3: ENCX101 or course in AML, ENL, or LIT (3) 4: ENCX101 and either ENCX102 or LITX005 (6)	3: ENCL101 4: ENCL101, LIT105*	3: AML2070 (3) 4: AML2070, LIT2139 (3)	3: ENCL101 (3) 4: ENCL101, 1102 (6)	3: ENCL101 (3) 4: ENCL101, 1102 (6)	3: ENCL101 or LIT300 (3) 4: ENCX101, ENCL102 or LITX000 (6)	
WORLD HISTORY	3/4: WOH1012 (3)	3/4: WOH202 (3)	3/4: WOHXXX (3)	3/4: WOH2001 (3)	3/4: WOHX022 (3)	3/4: WOH202 (3) 5: WOH203, 2030 (6)	3/4: WOHX022 (3)	3/4: WOH202	3/4: WOH000 (3)	3/4: WOH202 (3)	3/4: WOH202 (3)	3/4: WOH102 (3)	
US HISTORY	3: AMH1010 (3) 4: AMH200, 2020 (6)	3: AMH2010 (3) 4: AMH200, 2020 (6)	3: AMH2010 (3) 4: AMH200, 2020 (6)	3: SOCUC1 (3) 4: AMH200, 2020, AMH2020 (6)	3: AMHX000 (3) 4: AMH200, 2020 (6)	3: AMH2010 (3) 4: AMH200, 2020 (6)	3: AMHX000 (3) 4: AMH200, 2020 AND X020 (6)	3: AMH1000 4: AMH200, 2020	3: AMH000 (3) 4: AMH200, 2020 (6)	3: AMH1000 (3) 4: AMH200, 2020 (6)	3: AMH1000 (3) 4: AMH200, 2020 (6)	3: AMH1000 (3) 4: AMH200, 2020 (6)	
MICRO ECONOMICS	3/4: ECO2023 (3)	3/4: ECO2023 (3)	3/4: ECO2023 (3)	3/4: ECO2023 (3)	3/4: ECOX023 (3)	3/4: ECO2023 (3)	3/4: ECOX023 (3)	3/4: ECO2023	3/4: ECO2023 (3)	3/4: ECO2023 (3)	3/4: ECO2023 (3)	3/4: ECO2023 (3)	
US GOVT & POLITICS	3/4: POS2041 (3)	3/4: POS2041 (3)	3/4: POS2041 (3)	3/4: POS2041 (3)	3/4: POS2041 (3)	3/4: POS1041 (3)	3/4: POSX041 (3)	3/4: POS2041	3/4: POS2041 (3)	3/4: POS2041 (3)	3/4: POS2041 (3)	3/4: POS2041 (3)	
EUROPEAN HISTORY	3: EUH1000 (3) 4: EUH200, 2020 (6)	3: WOH202 (3) 4: EUH200, 2020 (6)	3: EUH200 (3) 4: EUH200, 1001 (6)	3: EUH200 (3) 4: EUH200, X001 (6)	3: EUHX009 (3) 4: EUHX000, X001 (6)	3: EUH1009 (3) 4: EUH200, 2001 (6)	3: EUHX009 (3) 4: EUHX000 AND EUHX001 (6)	3: EUH1009 4: EUH200, 2001 (6)	3: EUH200 (3) 4: EUH200, 1001 (6)	3: EUH200 (3) 4: EUH200, 1001 (6)	3: EUH200 (3) 4: EUH200, 1001 (6)	3: EUH200 (3) 4: EUH200, 1001 (6)	
COMP POLITICS	3/4: CPO2002 (3)	3/4: ENR2002 (3)	3/4: CPO2001 (3)	3/4: CPO2002 (3)	3/4: CPOX001 or X002 (3)	3/4: CPO2001	3/4: CPOX001 or CPOX002 (3)	3/4: CPO1002	3/4: CPO2001 (3)	3/4: CPO2002 or CPOX001 (3)	3/4: CPO2002 (3)	3/4: CPO2002 (3)	
PSYCHOLOGY	3/4: PSY2012 (3)	3/4: PSY1012 (3)	3/4: PSY2012 (3)	3/4: PSY2012 (3)	3/4: PSYX012 (3)	3/4: PSY2012 (3)	3/4: PSYX012 (3)	3/4: PSY2012	3/4: PSY2012 (3)	3/4: PSY2012 (3)	3/4: PSY2012 (3)	3/4: PSY2012 (3)	
CALC AB	3/4: MAC2311 (4)	3/4: MAC2311 (4)	3/4: MAC2311 (4)	3/4: MAC2311 (4)	3/4: MACX311 (4)	3/4: MAC2311 (4)	3/4: MACX311 (4)	3/4: MAC2311	3/4: MAC2311 (4)	3/4: MAC2311 (4)	3/4: MAC2311 (4)	3/4: MAC2311 (4)	
CALC BC	3: MAC2311 (4) 4: MAC2311, 2312 (8)	3: MAC2311 (4) 4: MAC2311, 2312 (8)	3: MAC2311 (4) 4: MAC2311, 2312 (8)	3: MAC2311 (4) 4: MAC2311, 2312 (8)	3: MACX311 (4) 4: MACX311, X312 (8)	3: MAC2311 (4) 4: MAC2311, 2312 (8)	3: MACX311 (4) 4: MACX311, MACX312 (8)	3: MAC2311 4: MAC2311, 2312	3: MAC2311 (4) 4: MAC2311, 2312 (8)	3: MAC2311 (4) 4: MAC2311, 2312 (8)	3: MAC2311 (4) 4: MAC2311, 2312 (8)	3: MAC2311 (4) 4: MAC2311, 2312 (8)	
STATISTICS	3/4: STA2023 (3)	3/4: STA2023 (3)	3/4: STA2023 (3)	3/4: STA1122 (3)	3/4: STA2023 (3)	3/4: STA2023 (3)	3/4: STA2023 (3)	3/4: STA2023	3/4: STA2023 (3)	3/4: STA2023 (3)	3/4: STA2023 (3)	3/4: STA2023 (3)	
BIOLOGY	3: BSC10051005L (4) 4: BSC10101010L (4) 5: BSC20101010L, BSC10111011L (8)	3: BSC10051005L (4) 4: BSC10101010L (4) 5: BSC20101010L, BSC10111011L (8)	3: BSC10051005L (4) 4: BSC10101010L (4) 5: BSC1010C, 1011C (8)	3: BSCXXX005005L (4) 4: BSC20101010L (4) 5: BSC20101010L, 2010C, BSC10111011L (8)	3: BSC10051005L (4) 4: BSC20101010L (4) 5: BSC20101010L, BSC20112011L (8)	3: BSC10051005L (4) 4: BSC20101010L (4) 5: BSC20101010L, BSC20112011L (8)	3: BSC10051005L (4) 4: BSC20101010L (4) 5: BSC20101010L, BSC20112011L (8)	3: BSC10051005L (4) 4: BSC20101010L (4) 5: BSC20101010L, BSC20112011L (8)	3: BSC10051005L (4) 4: BSC20101010L (4) 5: BSC20101010L, BSC20112011L (8)	3: BSC1005C (4) 4: BSC20101010L (4) 5: BSC20101010L, BSC20112011L (8)	3: BSC1005C (4) 4: BSC20101010L (4) 5: BSC20101010L, BSC20112011L (8)	3: BSC10051005L (4) 4: BSC20101010L (4) 5: BSC20101010L, BSC20112011L (8)	3: BSC10051005L (4) 4: BSC20101010L (4) 5: BSC20101010L, BSC20112011L (8)
SPANISH LANG	3: SPN220 (3) 4: SPN120, 1121 (6)	3: SPN220 (3) 4: SPN220, 2221 (6)	3: SPN220C (4) 4: SPN220C, 2221C (8)	3: SPN2200 (3) 4: SPN2200, 2201 (6)	3: 1 sem of Intro Lang) 4: 2 sem of Intermed Lang)	3: SPN220 (3) 4: SPN220, 2240 (7)	3: 1 sem of Intermed Lang) 4: 2 sem of Intermed Lang)	3: SPN200 4: SPN200, 2201	3: SPN200 (3) 4: SPN200, 2201 (6)	3: SPN200 (3) 4: SPN200, 2201 (6)	3: SPN200 (3) 4: SPN200, 2201 (6)	3: SPN200 (3) 4: SPN200, 2201 (6)	
STUDIO ART: 2D	3/4: ART1201C (3)	3/4: ART1201C (3)	3/4: ART1201 (3)	3/4: ART1201C (3)	3/4: ARTX101C (3)	3/4: ART1201C (3)	3/4: ARTX101C (3)	3/4: ART201C	3/4: ART1201C (3)	3/4: ART1201C (3)	3/4: ART1201C (3)	3/4: ART1201C (3)	
STUDIO ART: 3D	3/4: ART1203C (3)	3/4: ART1203C (3)	3/4: ART1203 (3)	3/4: ART1203C (3)	3/4: ARTX203C (3)	3/4: ART1203 (3)	3/4: ARTX203C (3)	3/4: ART2203C	3/4: ART1203C (3)	3/4: ART1203C (3)	3/4: ART1203C (3)	3/4: ART1203C (3)	
STUDIO ART: DRAWING	3/4: ART1300 (3)	3/4: ART1300C (3)	3/4: ART1300 (3)	3/4: ART1300C (3)	3/4: ARTX300C (3)	3/4: ART1300C (3)	3/4: ARTX300C (3)	3/4: ART2300C	3/4: ART1300C (3)	3/4: ART1300C (3)	3/4: ART1300C (3)	3/4: ART1300C (3)	
COMPUTER SCIENCE PRINCIPLES	TBD	TBD	3/4: COP1500 (3)	3/4: NPATUC1 (3)	TBD	3/4: CGS1000 (3)	3/4: COP-X000 (3)	3/4: CGS1075	3/4: CIS000 (3)	3/4: COP1000 (3)	3/4: COP1000 (3)	3/4: COP1000 (3)	
COMPUTER SCIENCE A	3/4: CGS2000 (3)	3/4: CGS1075 (3)	3/4: COP1500 (3)	3: ELEUC1 (3) 4: COP2210 (4)	3/4: CGSX075 (3)	3/4: CGS2000 (3)	3/4: CGSX075 (3)	TBD	3/4: CGS000 (3)	3/4: CGS1075 (3)	3/4: CGS1075 (3)	3/4: CGS1075 (3)	



ADVANCED PLACEMENT EQUIVALENCY

AICE & AP Courses Offered at Park Vista

**AICE GENERAL PAPER
AICE ENG LANGUAGE
AICE ENG LITERATURE
AICE MEDIA STUDIES AS
AICE DRAMA
AICE THINKING SKILLS
AICE CHEMISTRY 1 AS LVL
AICE ENVIRONMENTAL MGMT
AICE MARINE SCIENCE AS LVL
AICE MARINE SCIENCE A LVL
AICE GLOBAL PERSPECTIVES
AICE US HISTORY
AICE SOCIOLOGY
AICE TRAVEL & TOURISM
AICE SPANISH LANGUAGE
AICE FRENCH LANGUAGE
AICE ART & DESIGN
AICE INTERNATIONAL HISTORY
AICE MUSIC**

**AP ENG LITERATURE & COMPOSITION
AP CALCULUS AB
AP CALCULUS BC
AP STATISTICS
AP BIOLOGY
AP U.S. HISTORY
AP WORLD HISTORY
AP MICRO ECONOMICS
AP US GOVT & POLITICS
AP EUROPEAN HISTORY
AP COMP POLITICS
AP PSYCHOLOGY
AP SPANISH LANGUAGE
AP ART/DRAWING PORTFOLIO
AP COMPUTER SCIENCE PRINCIPLES
AP COMPUTER SCIENCE A**



“87% percent of all recent high school graduates surveyed say they would have worked harder if their high schools had demanded more, set higher academic standards, and raised expectations for the coursework and study necessary to earn a diploma.”

Principal Leadership, March 2015



- **For the 2016-2017 academic year, Park Vista had 5 National Merit Semifinalists!!!!!!**
- **For 2017-2018 we had 2 more!!!!!!**
- **For 2018-2019 we had 2 more!!!!!!**
- **For 2019-2020 we had 4 more!!!!!!**
- **For 2021-2021 we had 1 more!!!!!!**
- **For 2021-2022 we have 3 more!!!!!!**

They represent the top 1% in the World taking the PSAT test given each October.

Dual Enrollment

Earn college credit while at PVCHS!

- For eligible students with a 3.0 or above
- Dual enrollment ready scores on the SAT or ACT or PERT
- Choose Palm Beach State College or Florida Atlantic University
- A grade of “C” or better must be earned to continue
- 8 credit hours maximum per semester
- 1 Dual Enrollment class each semester will be offered at PVCHS next year (Medical Terminology & Health Concepts for Medical Academy Seniors only)

Remember!

Dual enrollment classes become part of the permanent college transcript and can impact eligibility for financial aid.

What does it take to go to College?

- **Nearly 40 percent of working-aged Americans now hold a college degree**
- **By 2025, almost two out of three jobs in the nation will require at least some postsecondary education or training**
- **For comparison, in 1973, workers with postsecondary education held only 28 percent of jobs**

State University System Matrix

FL SUS ADMISSIONS (Fall 2021 Middle Ranges)

		GPA	SAT	ACT	FALL DEADLINE			GPA	SAT	ACT	FALL DEADLINE
FLORIDA AGRICULTURAL AND MECHANICAL UNIVERSITY  Tallahassee, FL admissions.famu.edu		3.73 - 4.33	1110 - 1270	23 - 29	5.1.22	NEW COLLEGE OF FLORIDA  Sarasota, FL ncf.edu/admissions		3.5 - 4.2	1113 - 1320	22 - 29	11.1.21 2.1.22
FLORIDA ATLANTIC UNIVERSITY  Boca Raton, FL fau.edu/admissions		3.73 - 4.33	1110 - 1270	23 - 29	4.1.22	UNIVERSITY OF CENTRAL FLORIDA  Orlando, FL admissions.ucf.edu		3.96 - 4.49	1250 - 1370	26 - 30	5.1.22
FLORIDA GULF COAST UNIVERSITY  Fort Myers, FL fgcu.edu/admissionsandaid		3.56 - 4.33	1090 - 1230	22 - 27	11.1.21 3.1.22	UNIVERSITY OF FLORIDA  Gainesville, FL admissions.ufl.edu		4.4 - 4.7	1350 - 1480	30 - 34	11.1.21 3.1.22
FLORIDA INTERNATIONAL UNIVERSITY  Miami, FL admissions.fiu.edu		4.2 - 4.6	1200 - 1350	25 - 30	11.1.21 4.1.22	UNIVERSITY OF NORTH FLORIDA  Jacksonville, FL unf.edu/admissions		4.0 - 4.5	1100 - 1260	22 - 28	7.1.22 7.25.22
FLORIDA POLYTECHNIC UNIVERSITY  Lakeland, FL floridapoly.edu/admissions		4.1 - 4.6	1250 - 1400	27 - 31	11.1.21 3.1.22	UNIVERSITY OF SOUTH FLORIDA  Tampa, FL usf.edu/admissions		3.97 - 4.48	1230 - 1370	26 - 31	12.1.21 1.15.22
FLORIDA STATE UNIVERSITY  Tallahassee, FL admissions.fsu.edu		4.2 - 4.6	1250 - 1400	28 - 32	11.1.21 3.1.22	UNIVERSITY OF WEST FLORIDA  Pensacola, FL uwf.edu/admissions		3.61 - 4.2	1060 - 1240	21 - 27	12.1.21 6.1.21

What is required to be admitted to a 4 year University?



Minimum Requirements for Florida University Admission

- English – 4 years
- Math – 4 years (Algebra I, Geometry, Algebra II and one above Algebra II are a minimum)
- Science – 3 years
- Social Studies – 3 years
- Foreign Language - 2 consecutive years
- 4 additional academic credits (English, Math, Science, Social Studies or Foreign Language)
- A total of at least 18 ACADEMIC credits





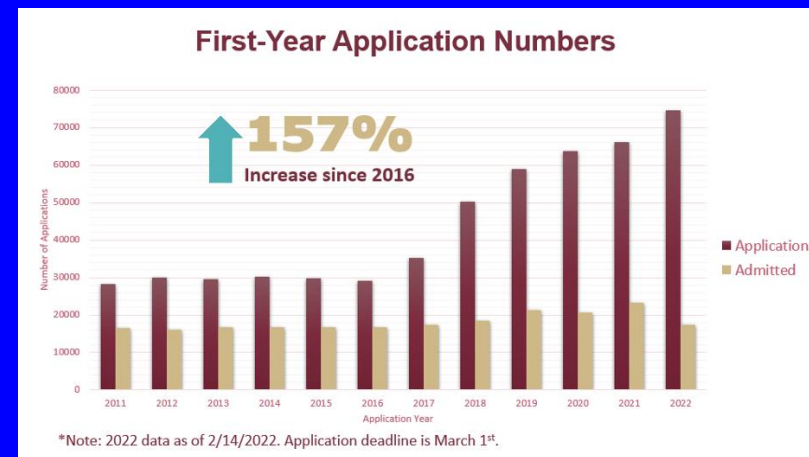
Florida State University's communication to school counselors February 24, 2022

This year's admitted students make up the most academically accomplished class in Florida State's history.

The middle 50% of students admitted for Fall 2022 had:

- Weighted Core GPA of 4.3 – 4.6
- Admitted students have taken an average of 9 AP, AICE, IB, or dual-enrollment courses while in high school
- ACT composite score of 29 – 32
- SAT total score of 1300 – 1430
- 23% acceptance rate (The Ivy League schools' acceptance rates are single digit)
- 79% of the admitted students earned all A & B grades

The top three areas of study for admitted students were business, biological science and engineering.



School counselors received this email from University of Florida Friday, March 4...

Greetings from Gainesville!

As we prepare for our decision release taking place this evening, here is some information about the application pool and review process this year.

Applicant Pool

To date, we have received more than 65,000 total applications, an increase of over 20% from this time last year, and more than double the total number of applications we received in 2016. We will be releasing nearly 53,000 decisions tonight.

As in the past, the great majority of applicants showed the potential for success at UF, and many more were recommended for admission than we have space to admit. We made some very difficult decisions and realize there will be both excitement and disappointment when students view decisions.

Admitted Students

Admissions offers are being made to just under 15,000 students to start on campus in the Summer B or Fall term. Admitted students had the following middle 50% ranges:

GPA: 4.4 – 4.6 (weighted recalculation)

SAT: 1340 – 1490

ACT: 29 – 33



Denied Students

Due to the competitiveness of the applicant pool, there will be many excellent students receiving denial decisions. While I know there will be short term disappointment, I feel confident these students will excel and do great things at another college or university.

**HOW MUCH DOES IT COST PER YEAR TO ATTEND A
4 YEAR PUBLIC UNIVERSITY IN FLORIDA?
(AVERAGE FOR 2021-2022)**

<u>CATEGORY</u>	<u>COSTS</u>
TUITION & FEES	\$6380.00
BOOKS/SUPPLIES	\$890.00
COMPUTER/CELL PHONE	\$1170.00
HOUSING	\$5990.00
FOOD	\$4600.00
TRANSPORTATION	\$1120.00
CLOTHING/MAINTENANCE	\$860.00
PERSONAL	\$420.00
TOTAL BUDGET	\$21,430.00

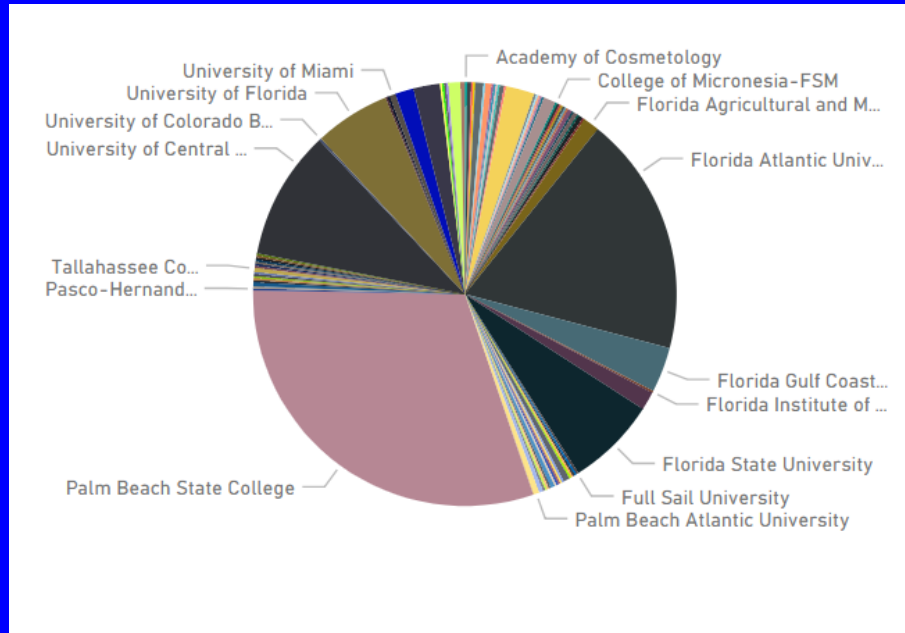


STATE UNIVERSITY COSTS VS STATE COLLEGE COSTS

<u>CATEGORY</u>	<u>COSTS AT A 4 YEAR STATE UNIVERSITY</u>	<u>COSTS AT A 2 YEAR STATE COLLEGE</u>
TUITION & FEES	\$6380.00	\$3050.00
BOOKS/SUPPLIES	\$890.00	\$1500.00
COMPUTER/CELL PHONE	\$1170.00	????
HOUSING	\$5990.00	Staying Home
FOOD	\$4600.00	Staying Home
TRANSPORTATION	\$1120.00	????
CLOTHING/MAINTENANCE	\$860.00	????
PERSONAL	\$420.00	????
TOTAL BUDGET	\$21,430.00	\$4550.00 AT LEAST

2021 PV's graduating seniors' plans.....

63%
4-Year
University



30%
2-Year
State College

The University of Alabama
Yale University
Florida Gulf Coast University
Florida Atlantic University
Paramedic/Fire Academy
Police Academy
University of Florida
University of Central Florida
Santa Fe College
Ringling College of Art & Design
United States Coast Guard
Cambridge Health
Florida International University
University of South Florida
USF St. Pete
Florida Polytechnic University
Flagler College
Florida State University
Florida Southern College
Florida Memorial University
Florida A&M University

United States Air Force
FAU Wilkes Honors College
Valencia Community College
Eckerd College
University of North Florida
United States Navy
University of Pennsylvania
Santa Cruz University
United States Army
Saint Johns River State College
Berklee School of Music
Stetson University
Georgia Institute of Technology
Keiser University
Valdosta State University
University of Miami
Seminole State College
Purdue University
Wingate University
Miami Dade College
Emory College

Columbia University
New York Institute of Technology
George Washington University
Prince George Community College
Duke University
University of Massachusetts-Amherst
Middlebury College
New York University
Cornell university
Brigham Young University-Idaho
Long Island University Brooklyn
Texas A&M University
Baker College
Ohio Wesleyan
Rochester Institute of Technology
Erskine College
Hillsborough Community College
Brevard College
University of Kentucky
Daytona State College
Jacksonville University

United States Naval Academy
Nova Southeastern University
Universal Technical Institute
Horry Georgetown Technical College
Palm Beach State College PSAV
Asheville Buncombe College
Bethel College
United States Marine Corps
Tallahassee Community College
University of Cincinnati

Technical School

Palm Beach State College offers 52 technical specialties in their Post Secondary Adult Vocation Program

Other technical schools include...





Military



Options

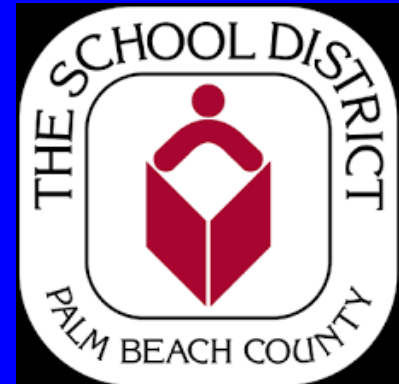
- Enter the military directly after high school
- Attend college on an ROTC scholarship
- Attend one of the service academies

Park Vista

- Military academy representatives visit each fall
- Military recruiters are available Wednesdays during lunch
- Armed Services Vocational Aptitude Battery Test (ASVAB) is given each November



Choice & Career Academies



Choice & Career Academies



- Series of Elective Courses on Schedule in a Career & Technical Education Course
- 4-Year Commitment
- Industry Certifications

Choice & Career Academies

- ❖ **CHOICE:** Any student may apply.
- ❖ **IN-HOUSE:** Only students zoned to that school may apply.

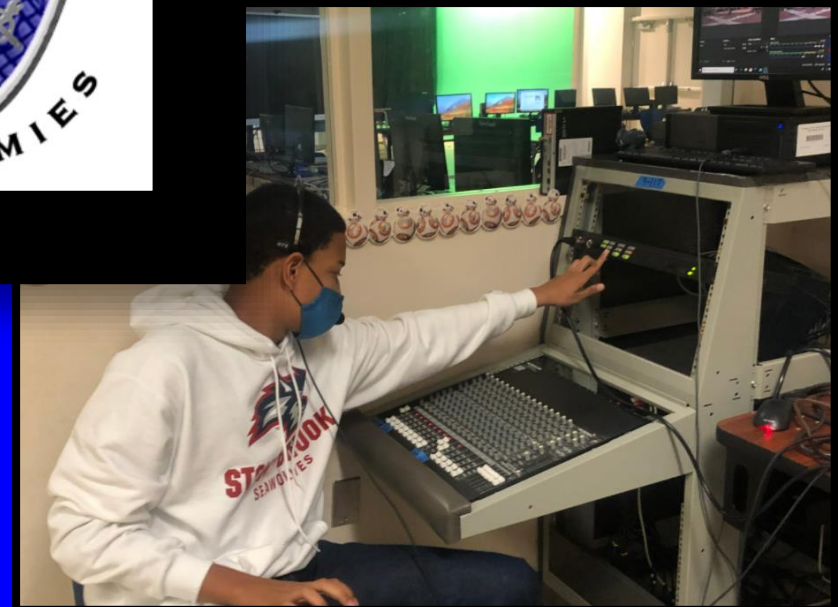
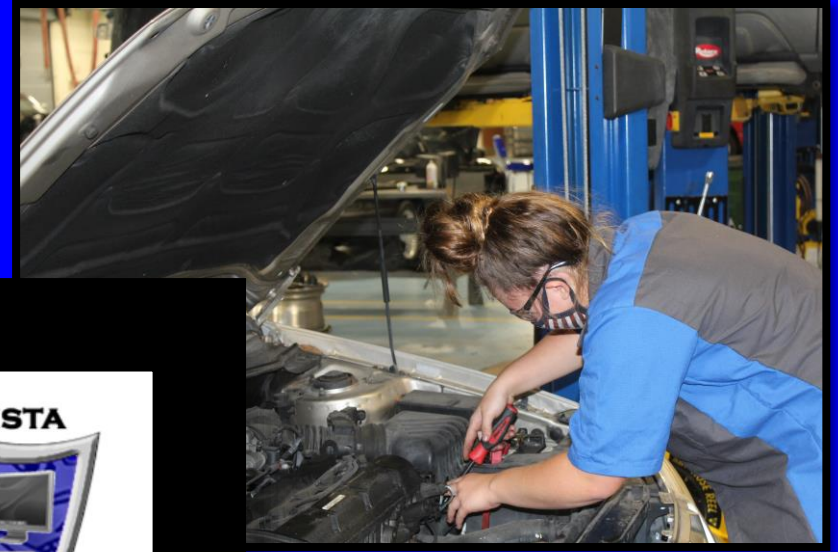


Choice & Career Academies

- ❖ HOW: mypbchoiceapp.com
- ❖ WHEN: November - January
- ❖ LOTTERY: April 1 District Assigns Seats



Park Vista Academies



**Park Vista Community High School
Academies**

CHOICE

**Automotive Collision, Repair &
Refinishing**

Automotive Service Technology

IN-HOUSE ONLY

Medical Sciences

**Multimedia
Communications**

TV/Video Production

Multimedia/Digital Design

Business & Entrepreneurship

Choice & Career Academies

	Choice	Choice	In-House	In-House
	Automotive Service Technology	Automotive Collision & Refinishing	Medical Sciences	Multimedia Communications
9	Automotive Maint/Light Repair 1 9504110	Coll Paint/Body Asst 9514010	Health Science A& P 8417100	TV Production Tech 1 or Prin of Entrep or IT Fundamentals or Dig Media/MM Found 1 or Digital Info Tech
10	Automotive Maint/Light Repair 2 9504120	Coll Paint/Body Asst 1 9514020	Health Science Foundations 8417110	TV Production Tech 2 or Bus Mgmt & Law or AP Comp Sci Princ or Dig Media/MM Found 2
11	Automotive Maint/Light Repair 3 9504130	Coll Paint/Body Asst 2 9514030	Med Lab Asst 3 or Emerg Med Resp 3 or Allied Health Asst 3 or Dual Enrollment or HSE Dir Study (Forensics)	TV Production Tech 3 or Business Ownership or Dig Media/MM Found 3
12	Automotive Maint/Light Repair 4 9504140	Coll Paint/Body Asst 3 9514040	Med Lab Asst 4 or Emerg Med Resp 3 or Allied Health Asst 3 or Dual Enrollment or HSE Dir Study (Forensics)	TV Production Tech 4 or Dig Design 4

College Readiness

Quotes from *THE FORGOTTEN MIDDLE: ENSURING THAT ALL STUDENTS ARE ON TARGET FOR COLLEGE AND CAREER READINESS BEFORE HIGH SCHOOL* published by ACT

“The results of The Forgotten Middle suggest that, in the current educational environment, there is a critical defining point for students in the college and career readiness process—one so important that, if students are not on target for college and career readiness by the time they reach this point, the impact may be nearly irreversible. We must therefore also focus on getting more students on target for college and career readiness by the end of eighth grade, so that they are prepared to maximize the benefits of high school.”

“Moreover, this research shows that, under current conditions, the level of academic achievement that students attain by eighth grade has a larger impact on their college and career readiness by the time they graduate from high school than anything that happens academically in high school. This report also reveals that students’ academic readiness for college and career can be improved when students develop behaviors in the upper elementary grades and in middle school that are known to contribute to successful academic performance.”

The Research Study

“This study had four purposes. First, we wanted to examine in greater depth the factors that influence college and career readiness. In doing so, we wanted to identify those factors that are the most effective predictors of college and career readiness from middle school to high school. Second, we wanted to examine the effect that certain steps to improve students’ level of academic preparation would have on their degree of readiness for college and career. Third, we wanted to examine the academic growth of these students during high school. Fourth, we wanted to examine the influence on their readiness of student behaviors related to academic performance. Our findings are summarized below.”

***Eighth-Grade Academic Achievement Is
the Best Predictor of College and
Career Readiness by High School
Graduation***

EXECUTIVE FUNCTION

Executive function is a set of mental skills that help you get things done. These skills are controlled by an area of the brain called the frontal lobe which will not reach full maturity until the late 20's. Executive function helps you: Manage time. Pay attention. Switch focus. Plan & organize. Remember details like homework!

The key to helping kids create the systems they need to gain executive function is to let them fail, let them feel the pain and inconvenience of their mistakes, and then support them in their efforts to rework the bugs.

Try, fail, suffer a little, remedy, try again.

Over and over again until they learn. A few missed lunches or a zero on the homework assignment she left on the kitchen counter will reinforce these skills better than your lectures or nagging ever will.

Every intervention or rescue is a lesson lost.

They need every minute, every learning opportunity inherent in their failures we can grant them before they face the much greater challenges and consequences that await them right around the corner in high school.

From THE GIFT OF FAILURE by Jessica Lahey

More quotes from THE GIFT OF FAILURE BY Jessica Lahey

Keep your kids on a regular sleep schedule, even on weekends and vacations. Studies show that it takes a long time to recover from even a small shift in sleep routines, and sufficient sleep is key to almost every aspect of developing executive function.

....what's needed during the middle school years is patience and a willingness to allow kids to deal with their failures and the consequences of their mistakes – whether those consequences are detention for forgetting homework, being benched at soccer for forgetting a mouth guard, or a demerit for tardiness while they learn how to organize themselves and get out of the house on time. Let them fail. Let them get upset when they make mistakes, and when they do, don't save them. Every consequence experienced will hasten your child's acquisition of these skills. Conversely, every time you rescue, you push your child's helplessness out another day. Remember how little time middle school kids have to make middle school mistakes before they are thrust into high school, and its relatively higher stakes.

If your child's school does not teach study skills, he/she is going to have to learn this essential curriculum at home. Work with your middle schooler to come up with a method for organization and planning.

Angela Duckworth on GRIT



FAMOUS “FAILURES”

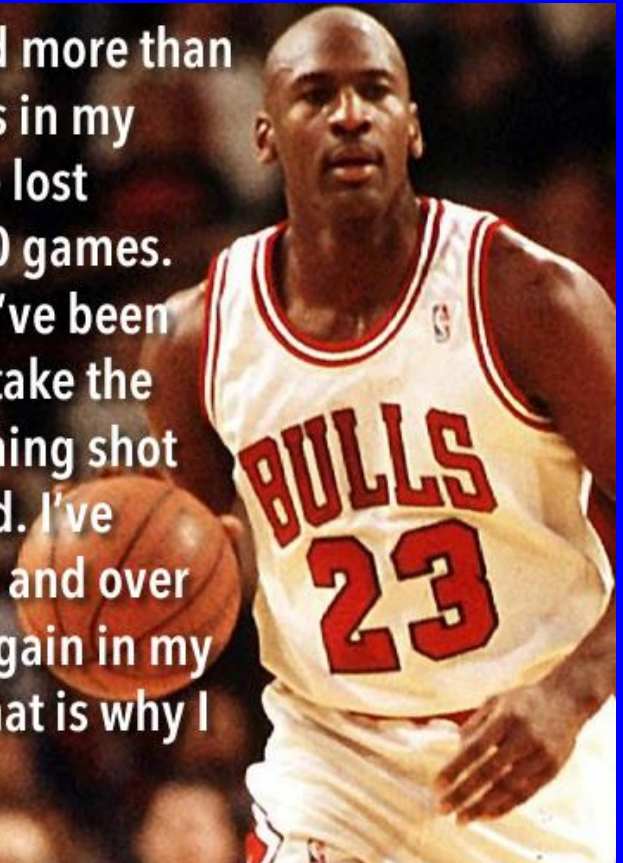
**I have not failed,
I've just found
10,000 ways
that won't work.**

- Thomas Alva Edison

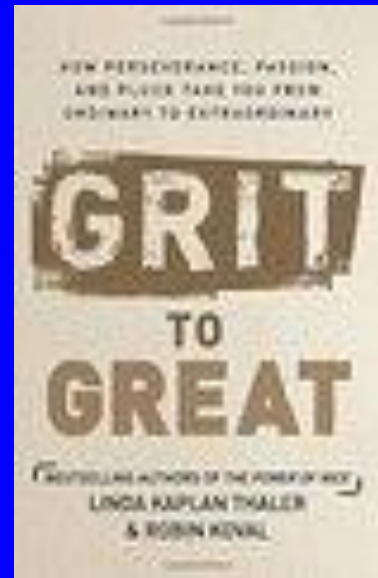
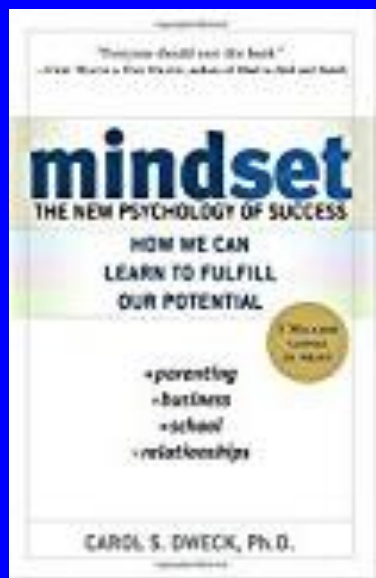
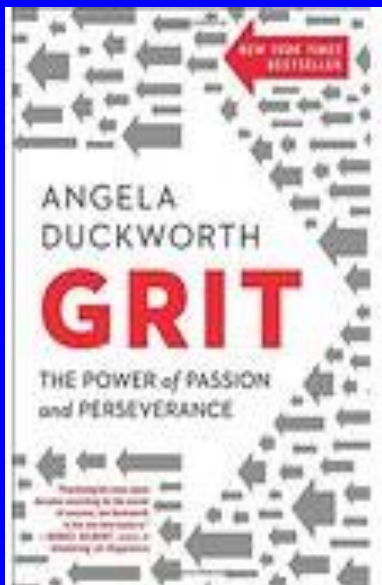
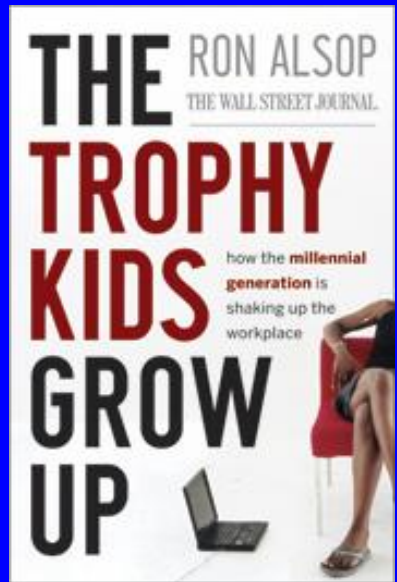
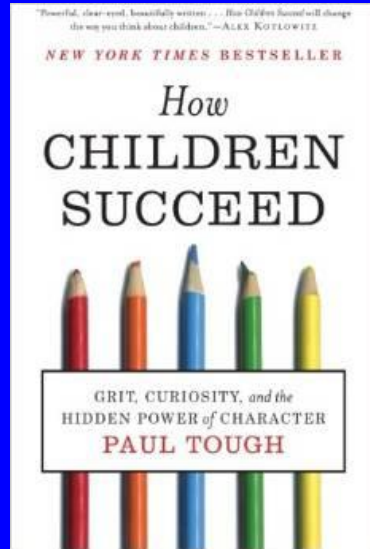
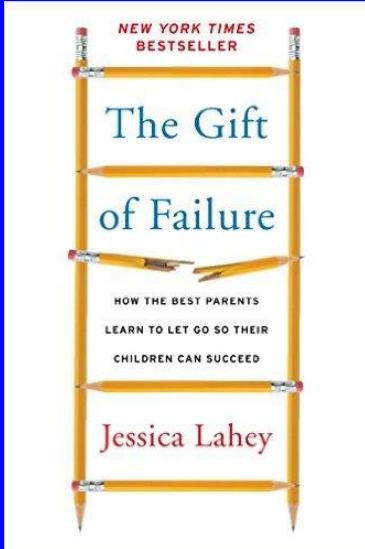
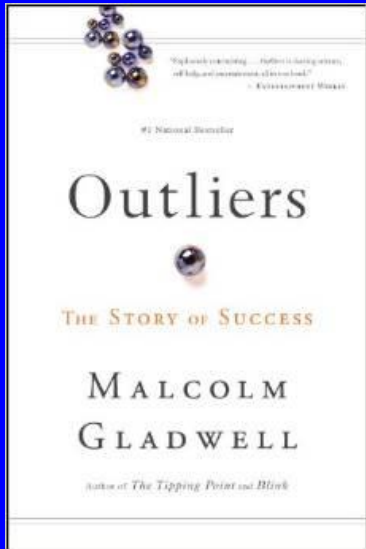


**I've missed more than
9000 shots in my
career. I've lost
almost 300 games.
26 times, I've been
trusted to take the
game winning shot
and missed. I've
failed over and over
and over again in my
life. And that is why I
succeed.**

Michael Jordan



Recommended Reading



**Where to find information about
Park Vista Community High School**

www.pvchs.com

QUESTIONS????